

PDE4D Rabbit Polyclonal Antibody



CAB1659

Product Information

Size:

20uL, 50uL, 100uL, 200uL

Observed MW:

91kDa, 105kDa

Calculated MW:

23-24kDa/57-91kDa

Applications:

WB IHC

Reactivity:

Human, Mouse, Rat

Antibody Information

Recommended dilutions:

WB 1:500 - 1:2000 IHC 1:50
- 1:200

Source:

Rabbit

Isotype:

IgG

Purification:

Affinity purification

Protein Background

This gene encodes one of four mammalian counterparts to the fruit fly 'dunce' gene. The encoded protein has 3', 5'-cyclic-AMP phosphodiesterase activity and degrades cAMP, which acts as a signal transduction molecule in multiple cell types. This gene uses different promoters to generate multiple alternatively spliced transcript variants that encode functional proteins.

Immunogen information

Gene ID:

5144

Uniprot

Q08499

Synonyms:

PDE4D; ACRDYS2; DPDE3; HSPDE4D; PDE43; PDE4DN2; STRK1

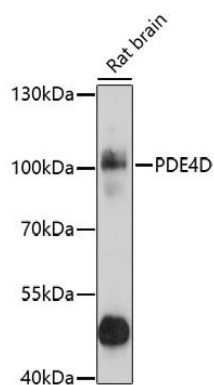
Immunogen:

Recombinant fusion protein containing a sequence corresponding to amino acids 249-518 of human PDE4D (NP_001184152.1).

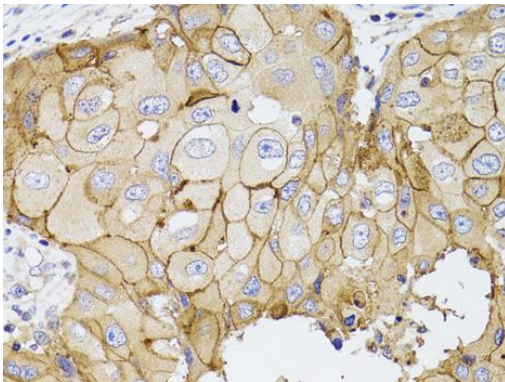
Storage:

Store at -20°C. Avoid freeze / thaw cycles. Buffer: PBS with 0.02% sodium azide, 50% glycerol, pH7.3.

Product Images



Western blot analysis of extracts of rat brain, using PDE4D antibody (CAB1659) at 1:1000 dilution. Secondary antibody: HRP Goat Anti-Rabbit IgG (H+L) (CABS014) at 1:10000 dilution. Lysates/proteins: 25ug per lane. Blocking buffer: 3% nonfat dry milk in TBST. Detection: ECL Basic Kit (CABM00020). Exposure time: 5s.



Immunohistochemistry of paraffin-embedded human breast cancer using PDE4D antibody (CAB1659) at dilution of 1:100 (40x lens).