

SELPLG Rabbit Polyclonal Antibody



CAB1660

Product Information

Size:

20uL, 50uL, 100uL, 200uL

Observed MW:

52kDa

Calculated MW:

43kDa/44kDa

Applications:

WB

Reactivity:

Human

Protein Background

This gene encodes a glycoprotein that functions as a high affinity counter-receptor for the cell adhesion molecules P-, E- and L- selectin expressed on myeloid cells and stimulated T lymphocytes. As such, this protein plays a critical role in leukocyte trafficking during inflammation by tethering of leukocytes to activated platelets or endothelia expressing selectins. This protein requires two post-translational modifications, tyrosine sulfation and the addition of the sialyl Lewis x tetrasaccharide (sLex) to its O-linked glycans, for its high-affinity binding activity. Aberrant expression of this gene and polymorphisms in this gene are associated with defects in the innate and adaptive immune response. Alternate splicing results in multiple transcript variants.

Immunogen information

Gene ID:

6404

Uniprot

Q14242

Antibody Information

Recommended dilutions:

WB 1:500 - 1:2000

Source:

Rabbit

Isotype:

IgG

Purification:

Affinity purification

Synonyms:

SELPLG; CD162; CLA; PSGL-1; PSGL1

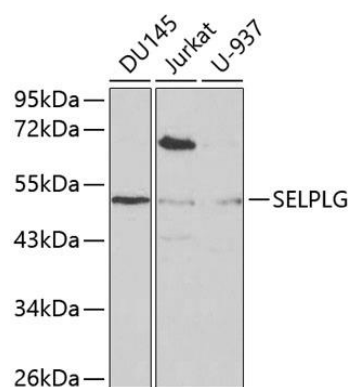
Immunogen:

Recombinant fusion protein containing a sequence corresponding to amino acids 40-280 of human SELPLG (NP_002997.1).

Storage:

Store at -20°C. Avoid freeze / thaw cycles. Buffer: PBS with 0.02% sodium azide, 50% glycerol, pH7.3.

Product Images



Western blot analysis of extracts of various cell lines, using SELPLG antibody (CAB1660) at 1:1000 dilution. Secondary antibody: HRP Goat Anti-Rabbit IgG (H+L) (CABS014) at 1:10000 dilution. Lysates/proteins: 25ug per lane. Blocking buffer: 3% nonfat dry milk in TBST.