

# PPM1K Rabbit Polyclonal Antibody



CAB16602

## Product Information

### Size:

20uL, 50uL, 100uL, 200uL

### Observed MW:

41kDa

### Calculated MW:

16kDa/25kDa/40kDa

### Applications:

WB

### Reactivity:

Human, Mouse, Rat

## Protein Background

This gene encodes a member of the PPM family of Mn<sup>2+</sup>/Mg<sup>2+</sup>-dependent protein phosphatases. The encoded protein, essential for cell survival and development, is targeted to the mitochondria where it plays a key role in regulation of the mitochondrial permeability transition pore.

## Immunogen information

### Gene ID:

152926

### Uniprot

Q8N3J5

### Synonyms:

PPM1K; BDP; MSUDMV; PP2Ckappa; PP2Cm; PTMP; UG0882E07

## Antibody Information

### Recommended dilutions:

WB 1:500 - 1:2000

### Source:

Rabbit

### Isotype:

IgG

### Purification:

Affinity purification

### Immunogen:

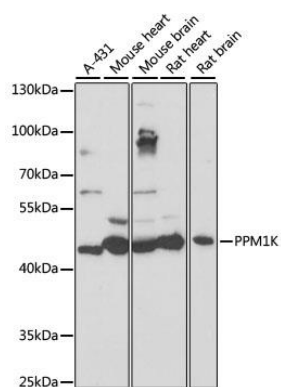
Recombinant fusion protein containing a sequence corresponding to amino acids 183-372 of human PPM1K (NP\_689755.3).

### Storage:

Store at -20°C. Avoid freeze / thaw cycles. Buffer: PBS with 0.02% sodium azide, 50% glycerol, pH7.3.

## Product Images

---



Western blot analysis of extracts of various cell lines, using PPM1K antibody (CAB16602) at 1:1000 dilution. Secondary antibody: HRP Goat Anti-Rabbit IgG (H+L) (CABS014) at 1:10000 dilution. Lysates/proteins: 25ug per lane. Blocking buffer: 3% nonfat dry milk in TBST. Detection: ECL Basic Kit (CABM00020). Exposure time: 1s.