

# RBMY1F Rabbit Polyclonal Antibody



CAB16604

---

## Product Information

**Size:**

20uL, 50uL, 100uL, 200uL

**Observed MW:**

56kDa

**Calculated MW:**

47kDa/55kDa

**Applications:**

WB

**Reactivity:**

Rat

## Antibody Information

**Recommended dilutions:**

WB 1:500 - 1:2000

**Source:**

Rabbit

**Isotype:**

IgG

**Purification:**

Affinity purification

## Protein Background

This gene encodes a protein containing an RNA-binding motif in the N-terminus and four SRGY (serine, arginine, glycine, tyrosine) boxes in the C-terminus. Multiple copies of this gene are found in the AZFb azoospermia factor region of chromosome Y and the encoded protein is thought to be involved in spermatogenesis. Most copies of this locus are pseudogenes, although six highly similar copies have full-length ORFs and are considered functional. Four functional copies of this gene are found within inverted repeat IR2; two functional copies of this gene are found in palindrome P3, along with two copies of PTPN13-like, Y-linked.

## Immunogen information

**Gene ID:**

159163

**Uniprot**

Q15415

**Synonyms:**

RBMY1F; YRRM2; RNA binding motif protein; Y-linked; family 1; member F

**Immunogen:**

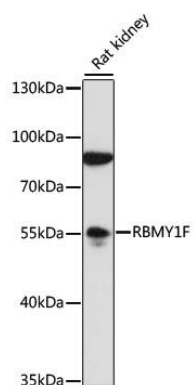
Recombinant fusion protein containing a sequence corresponding to amino acids 1-80 of human RBMY1F (NP\_689798.1).

**Storage:**

Store at -20°C. Avoid freeze / thaw cycles. Buffer: PBS with 0.02% sodium azide, 50% glycerol, pH7.3.

## Product Images

---



Western blot analysis of extracts of rat kidney, using RBMY1F antibody (CAB16604) at 1:1000 dilution. Secondary antibody: HRP Goat Anti-Rabbit IgG (H+L) (CABS014) at 1:10000 dilution. Lysates/proteins: 25ug per lane. Blocking buffer: 3% nonfat dry milk in TBST. Detection: ECL Basic Kit (CABM00020). Exposure time: 1s.