

CFAP53 Rabbit Polyclonal Antibody



CAB16607

Product Information

Size:

20uL, 50uL, 100uL, 200uL

Observed MW:

62kDa

Calculated MW:

61kDa

Applications:

WB IF

Reactivity:

Human, Mouse, Rat

Protein Background

This gene belongs to the CFAP53 family. It was found to be differentially expressed by the ciliated cells of frog epidermis and in skin fibroblasts from human. Mutations in this gene are associated with visceral heterotaxy-6, which implicates this gene in determination of left-right asymmetric patterning.

Immunogen information

Gene ID:

220136

Uniprot

Q96M91

Synonyms:

CFAP53; CCDC11; HTX6

Antibody Information

Recommended dilutions:

WB 1:500 - 1:2000 IF 1:50 - 1:200

Source:

Rabbit

Isotype:

IgG

Purification:

Affinity purification

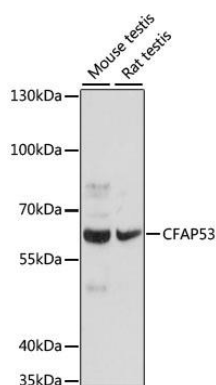
Immunogen:

Recombinant fusion protein containing a sequence corresponding to amino acids 1-300 of human CFAP53 (NP_659457.2).

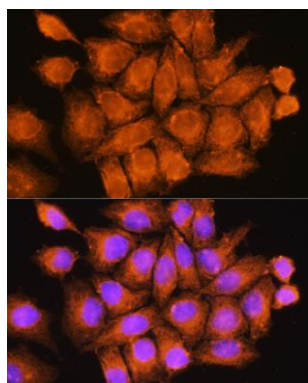
Storage:

Store at -20°C. Avoid freeze / thaw cycles. Buffer: PBS with 0.02% sodium azide, 50% glycerol, pH7.3.

Product Images



Western blot analysis of extracts of various cell lines, using CFAP53 antibody (CAB16607) at 1:1000 dilution. Secondary antibody: HRP Goat Anti-Rabbit IgG (H+L) (CABS014) at 1:10000 dilution. Lysates/proteins: 25ug per lane. Blocking buffer: 3% nonfat dry milk in TBST. Detection: ECL Basic Kit (CABM00020). Exposure time: 10s.



Immunofluorescence analysis of HeLa cells using CFAP53 Rabbit pAb (CAB16607) at dilution of 1:100. Blue: DAPI for nuclear staining.