

THSD7A Rabbit Polyclonal Antibody



CAB16610

Product Information

Size:

20uL, 50uL, 100uL, 200uL

Observed MW:

260kDa

Calculated MW:

185kDa

Applications:

WB

Reactivity:

Human

Protein Background

The protein encoded by this gene is found almost exclusively in endothelial cells from placenta and umbilical cord. The encoded protein appears to interact with alpha(V)beta(3) integrin and paxillin to inhibit endothelial cell migration and tube formation. This protein may be involved in cytoskeletal organization. Variations in this gene may be associated with low bone mineral density in osteoporosis.

Immunogen information

Gene ID:

221981

Uniprot

Q9UPZ6

Synonyms:

THSD7A

Antibody Information

Recommended dilutions:

WB 1:500 - 1:2000

Source:

Rabbit

Isotype:

IgG

Purification:

Affinity purification

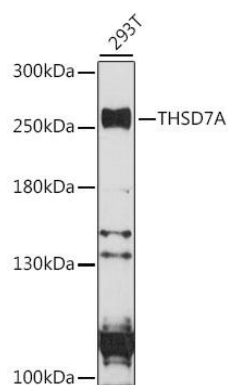
Immunogen:

Recombinant fusion protein containing a sequence corresponding to amino acids 48-350 of human THSD7A (NP_056019.1).

Storage:

Store at -20°C. Avoid freeze / thaw cycles. Buffer: PBS with 0.02% sodium azide, 50% glycerol, pH7.3.

Product Images



Western blot analysis of extracts of 293T cells, using THSD7A antibody (CAB16610) at 1:1000 dilution. Secondary antibody: HRP Goat Anti-Rabbit IgG (H+L) (CABS014) at 1:10000 dilution. Lysates/proteins: 25ug per lane. Blocking buffer: 3% nonfat dry milk in TBST. Detection: ECL Basic Kit (CABM00020). Exposure time: 90s.