

ATP11C Rabbit Polyclonal Antibody



CAB16616

Product Information

Size:

20uL, 50uL, 100uL, 200uL

Observed MW:

157kDa

Calculated MW:

126kDa/128kDa/129kDa

Applications:

WB

Reactivity:

Human, Mouse

Antibody Information

Recommended dilutions:

WB 1:500 - 1:2000

Source:

Rabbit

Isotype:

IgG

Purification:

Affinity purification

Protein Background

Immunogen information

Gene ID:

286410

Uniprot

Q8NB49

Synonyms:

ATP11C; ATPIG; ATPIQ

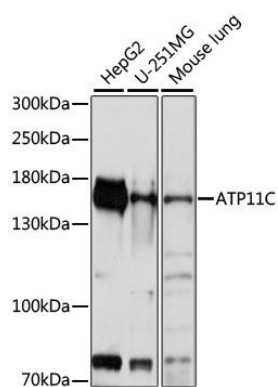
Immunogen:

Recombinant fusion protein containing a sequence corresponding to amino acids 430-650 of human ATP11C (NP_775965.2).

Storage:

Store at -20°C. Avoid freeze / thaw cycles. Buffer: PBS with 0.02% sodium azide, 50% glycerol, pH7.3.

Product Images



Western blot analysis of extracts of various cell lines, using ATP11C antibody (CAB16616) at 1:1000 dilution. Secondary antibody: HRP Goat Anti-Rabbit IgG (H+L) (CABS014) at 1:10000 dilution. Lysates/proteins: 25ug per lane. Blocking buffer: 3% nonfat dry milk in TBST. Detection: ECL Basic Kit (CABM00020). Exposure time: 5s.