

[KO Validated] ADRBK1 Rabbit Polyclonal Antibody

CAB1662



Product Information

Size:

20uL, 50uL, 100uL, 200uL

Observed MW:

80kDa

Calculated MW:

79kDa

Applications:

WB IHC

Reactivity:

Human, Mouse, Rat

Protein Background

The product of this gene phosphorylates the beta-2-adrenergic receptor and appears to mediate agonist-specific desensitization observed at high agonist concentrations. This protein is an ubiquitous cytosolic enzyme that specifically phosphorylates the activated form of the beta-adrenergic and related G-protein-coupled receptors. Abnormal coupling of beta-adrenergic receptor to G protein is involved in the pathogenesis of the failing heart.

Immunogen information

Gene ID:

156

Uniprot

P25098

Synonyms:

GRK2; ADRBK1; BARK1; BETA-ARK1

Antibody Information

Recommended dilutions:

WB 1:500 - 1:2000 IHC 1:50 - 1:200

Source:

Rabbit

Isotype:

IgG

Purification:

Affinity purification

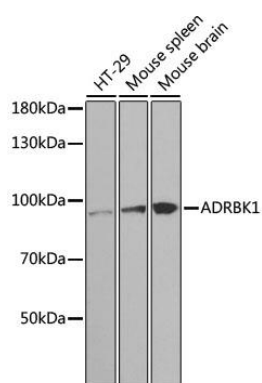
Immunogen:

Recombinant fusion protein containing a sequence corresponding to amino acids 440-689 of human ADRBK1 (NP_001610.2).

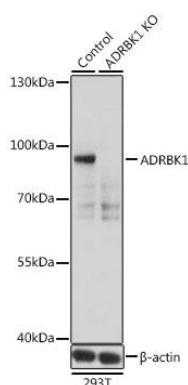
Storage:

Store at -20°C. Avoid freeze / thaw cycles. Buffer: PBS with 0.02% sodium azide, 50% glycerol, pH7.3.

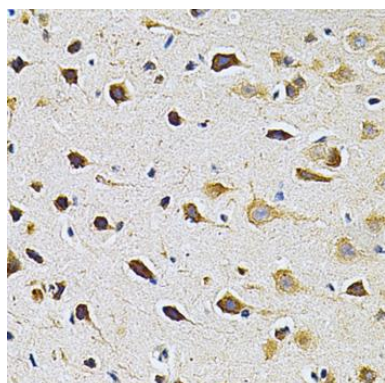
Product Images



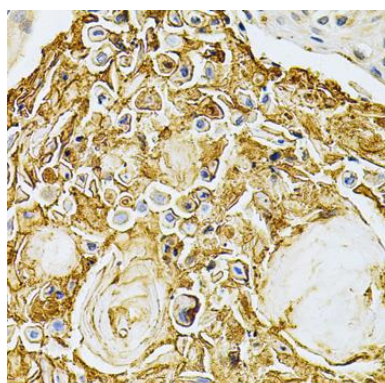
Western blot analysis of extracts of various cell lines, using ADRBK1 antibody (CAB1662) at 1:1000 dilution. Secondary antibody: HRP Goat Anti-Rabbit IgG (H+L) (CABS014) at 1:10000 dilution. Lysates/proteins: 25ug per lane. Blocking buffer: 3% nonfat dry milk in TBST.



Western blot analysis of extracts from normal (control) and ADRBK1 knockout (KO) 293T cells, using ADRBK1 antibody (CAB1662) at 1:500 dilution. Secondary antibody: HRP Goat Anti-Rabbit IgG (H+L) (CABS014) at 1:10000 dilution. Lysates/proteins: 25ug per lane. Blocking buffer: 3% nonfat dry milk in TBST. Detection: ECL Basic Kit (CABM00020). Exposure time: 1s.



Immunohistochemistry of paraffin-embedded rat brain using ADRBK1 Antibody (CAB1662) at dilution of 1:200 (40x lens).



Immunohistochemistry of paraffin-embedded human esophageal cancer using ADRBK1 Antibody (CAB1662) at dilution of 1:200 (40x lens).