

# Myelin Basic protein Rabbit Polyclonal Antibody



CAB1664

## Product Information

### Size:

20uL, 50uL, 100uL, 200uL

### Observed MW:

17kDa/33kDa/40kDa

### Calculated MW:

17kDa/18kDa/20kDa/21kDa/  
33kDa

### Applications:

WB IHC

### Reactivity:

Human, Mouse, Rat

## Antibody Information

### Recommended dilutions:

WB 1:500 - 1:2000 IHC 1:50  
- 1:200

### Source:

Rabbit

### Isotype:

IgG

### Purification:

Affinity purification

## Protein Background

The protein encoded by the classic MBP gene is a major constituent of the myelin sheath of oligodendrocytes and Schwann cells in the nervous system. However, MBP-related transcripts are also present in the bone marrow and the immune system. These mRNAs arise from the long MBP gene (otherwise called 'Golli-MBP') that contains 3 additional exons located upstream of the classic MBP exons. Alternative splicing from the Golli and the MBP transcription start sites gives rise to 2 sets of MBP-related transcripts and gene products. The Golli mRNAs contain 3 exons unique to Golli-MBP, spliced in-frame to 1 or more MBP exons. They encode hybrid proteins that have N-terminal Golli aa sequence linked to MBP aa sequence. The second family of transcripts contain only MBP exons and produce the well characterized myelin basic proteins. This complex gene structure is conserved among species suggesting that the MBP transcription unit is an integral part of the Golli transcription unit and that this arrangement is important for the function and/or regulation of these genes.

## Immunogen information

### Gene ID:

4155

### Uniprot

P02686

### Synonyms:

MBP

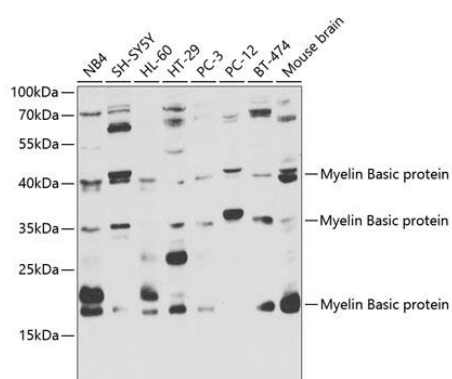
### Immunogen:

Recombinant fusion protein containing a sequence corresponding to amino acids 1-197 of human Myelin Basic protein (NP\_001020271.1).

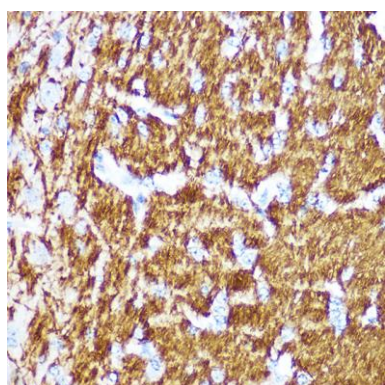
### Storage:

Store at -20°C. Avoid freeze / thaw cycles. Buffer: PBS with 0.02% sodium azide, 50% glycerol, pH7.3.

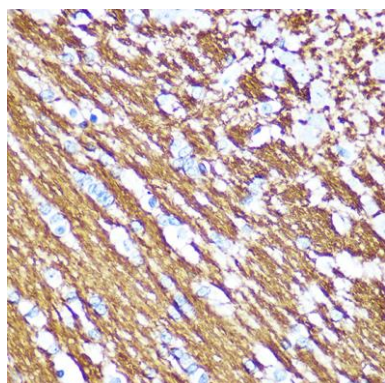
## Product Images



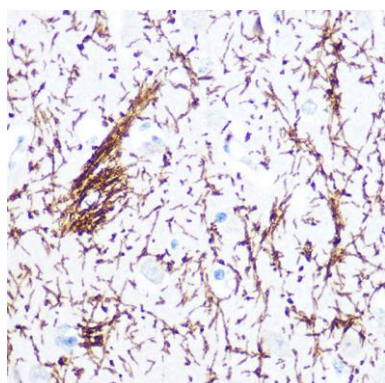
Western blot analysis of extracts of various cell lines, using Myelin Basic protein antibody (CAB1664) at 1:1000 dilution. Secondary antibody: HRP Goat Anti-Rabbit IgG (H+L) (CABS014) at 1:10000 dilution. Lysates/proteins: 25ug per lane. Blocking buffer: 3% nonfat dry milk in TBST. Detection: ECL Basic Kit (CABM00020). Exposure time: 60s.



Immunohistochemistry of paraffin-embedded mouse brain using Myelin Basic protein Rabbit pAb (CAB1664) at dilution of 1:100 (40x lens).



Immunohistochemistry of paraffin-embedded rat brain using Myelin Basic protein Rabbit pAb (CAB1664) at dilution of 1:100 (40x lens).



Immunohistochemistry of paraffin-embedded human brain using Myelin Basic protein Rabbit pAb (CAB1664) at dilution of 1:100 (40x lens).