

TGFB1 Rabbit Polyclonal Antibody



CAB16640

Product Information

Size:

20uL, 50uL, 100uL, 200uL

Observed MW:

12KDa/50KDa

Calculated MW:

44kDa

Applications:

WB IHC

Reactivity:

Human, Mouse, Rat

Antibody Information

Recommended dilutions:

WB 1:500 - 1:2000 IHC 1:50
- 1:200

Source:

Rabbit

Isotype:

IgG

Purification:

Affinity purification

Protein Background

This gene encodes a member of the transforming growth factor beta (TGFB) family of cytokines, which are multifunctional peptides that regulate proliferation, differentiation, adhesion, migration, and other functions in many cell types. Many cells have TGFB receptors, and the protein positively and negatively regulates many other growth factors. The secreted protein is cleaved into a latency-associated peptide (LAP) and a mature TGFB1 peptide, and is found in either a latent form composed of a TGFB1 homodimer, a LAP homodimer, and a latent TGFB1-binding protein, or in an active form composed of a TGFB1 homodimer. The mature peptide may also form heterodimers with other TGFB family members. This gene is frequently upregulated in tumor cells, and mutations in this gene result in Camurati-Engelmann disease.

Immunogen information

Gene ID:

7040

Uniprot

P01137

Synonyms:

TGFB1; CED; DPD1; LAP; TGFB; TGFbeta; TGF-Beta

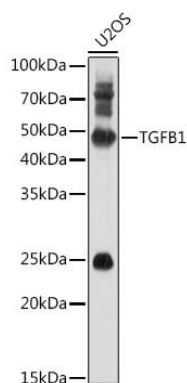
Immunogen:

Recombinant fusion protein containing a sequence corresponding to amino acids 30-278 of human TGFB1 (NP_000651.3).

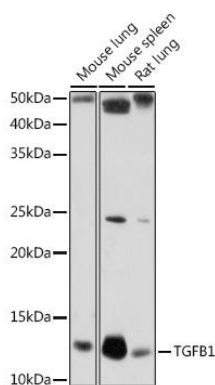
Storage:

Store at -20°C. Avoid freeze / thaw cycles. Buffer: PBS with 0.02% sodium azide, 50% glycerol, pH7.3.

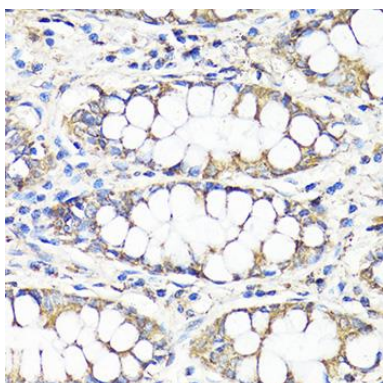
Product Images



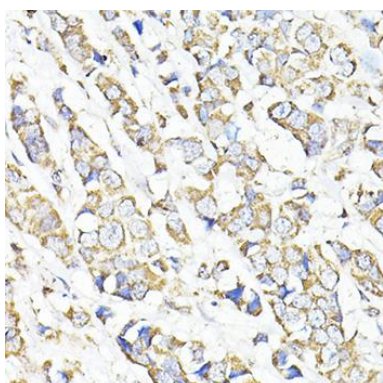
Western blot analysis of extracts of U2OS cells, using TGFβ1 antibody (CAB16640) at 1:1000 dilution. Secondary antibody: HRP Goat Anti-Rabbit IgG (H+L) (CABS014) at 1:10000 dilution. Lysates/proteins: 25ug per lane. Blocking buffer: 3% nonfat dry milk in TBST. Detection: ECL Basic Kit (CABM00020). Exposure time: 60s.



Western blot analysis of extracts of various cell lines, using TGFβ1 antibody (CAB16640) at 1:1000 dilution. Secondary antibody: HRP Goat Anti-Rabbit IgG (H+L) (CABS014) at 1:10000 dilution. Lysates/proteins: 25ug per lane. Blocking buffer: 3% nonfat dry milk in TBST. Detection: ECL Basic Kit (CABM00020). Exposure time: 60s.



Immunohistochemistry of paraffin-embedded human colon using TGFβ1 antibody (CAB16640) at dilution of 1:100 (40x lens).



Immunohistochemistry of paraffin-embedded human breast cancer using TGFβ1 antibody (CAB16640) at dilution of 1:100 (40x lens).