

**[KO Validated] CHCHD2 Rabbit Polyclonal  
Antibody  
CAB16645**



---

**Product Information**

**Size:**

20uL, 50uL, 100uL, 200uL

**Observed MW:**

16kDa

**Calculated MW:**

15kDa

**Applications:**

WB IHC IF

**Reactivity:**

Human, Mouse, Rat

**Antibody Information**

**Recommended dilutions:**

WB 1:500 - 1:2000 IHC 1:50  
- 1:200 IF 1:50 - 1:200

**Source:**

Rabbit

**Isotype:**

IgG

**Purification:**

Affinity purification

**Protein Background**

The protein encoded by this gene belongs to a class of eukaryotic CX(9)C proteins characterized by four cysteine residues spaced ten amino acids apart from one another. These residues form disulfide linkages that define a CHCH fold. In response to stress, the protein translocates from the mitochondrial intermembrane space to the nucleus where it binds to a highly conserved 13 nucleotide oxygen responsive element in the promoter of cytochrome oxidase 4I2, a subunit of the terminal enzyme of the electron transport chain. In concert with recombination signal sequence-binding protein J, binding of this protein activates the oxygen responsive element at four percent oxygen. In addition, it has been shown that this protein is a negative regulator of mitochondria-mediated apoptosis. In response to apoptotic stimuli, mitochondrial levels of this protein decrease, allowing BCL2-associated X protein to oligomerize and activate the caspase cascade. Pseudogenes of this gene are found on multiple chromosomes. Alternative splicing results in multiple transcript variants.

**Immunogen information**

**Gene ID:**

51142

**Uniprot**

Q9Y6H1

**Synonyms:**

CHCHD2; C7orf17; MNRR1; NS2TP; PARK22

**Immunogen:**

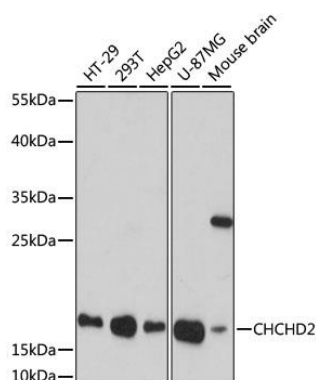
Recombinant fusion protein containing a sequence corresponding to amino acids 75-145 of human CHCHD2 (NP\_057223.1).

**Storage:**

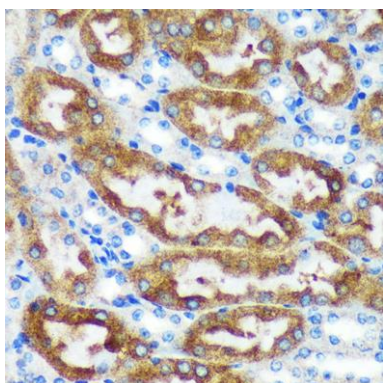
Store at -20°C. Avoid freeze / thaw cycles. Buffer: PBS with 0.02% sodium azide, 50% glycerol, pH7.3.

## Product Images

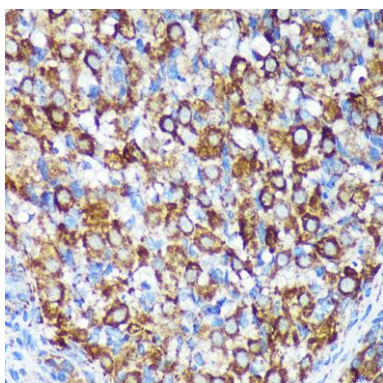
---



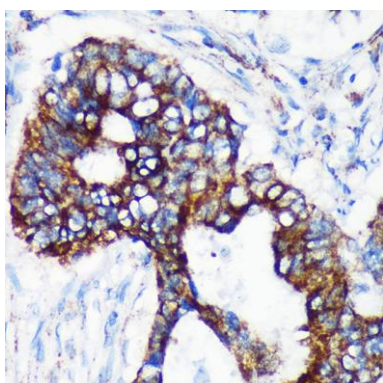
Western blot analysis of extracts of various cell lines, using CHCHD2 antibody (CAB16645) at 1:1000 dilution. Secondary antibody: HRP Goat Anti-Rabbit IgG (H+L) (CABS014) at 1:10000 dilution. Lysates/proteins: 25ug per lane. Blocking buffer: 3% nonfat dry milk in TBST. Detection: ECL Basic Kit (CABM00020). Exposure time: 90s.



Immunohistochemistry of paraffin-embedded Mouse kidney using [KO Validated] CHCHD2 Rabbit pAb (CAB16645) at dilution of 1:100 (40x lens).



Immunohistochemistry of paraffin-embedded Rat ovary using [KO Validated] CHCHD2 Rabbit pAb (CAB16645) at dilution of 1:100 (40x lens).



Immunohistochemistry of paraffin-embedded Human colon carcinoma using [KO Validated] CHCHD2 Rabbit pAb (CAB16645) at dilution of 1:100 (40x lens).