

# PDPK1 Rabbit Polyclonal Antibody



CAB1665

## Product Information

### Size:

20uL, 50uL, 100uL, 200uL

### Observed MW:

58-68KDa

### Calculated MW:

48kDa/50kDa/58kDa/60kDa/  
63kDa

### Applications:

WB IHC IF

### Reactivity:

Human, Mouse, Rat

## Antibody Information

### Recommended dilutions:

WB 1:500 - 1:2000 IHC 1:50  
- 1:200 IF 1:50 - 1:200

### Source:

Rabbit

### Isotype:

IgG

### Purification:

Affinity purification

## Protein Background

PDPK1 (3-phosphoinositide dependent protein kinase 1) is a protein-coding gene. GO annotations related to this gene include protein serine/threonine kinase activity and insulin receptor binding.

## Immunogen information

### Gene ID:

5170

### Uniprot

O15530

### Synonyms:

PDPK1; PDK1; PDPK2; PDPK2P; PRO0461

### Immunogen:

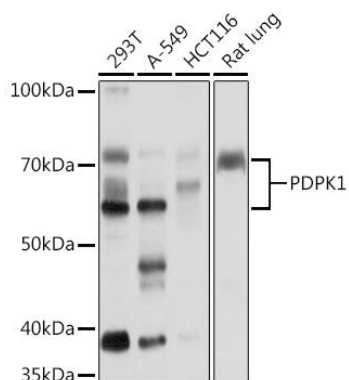
Recombinant fusion protein containing a sequence corresponding to amino acids 150-429 of human PDPK1 (NP\_112558.2).

### Storage:

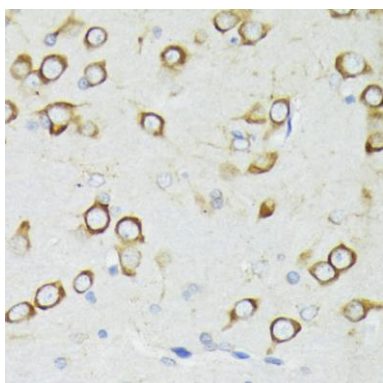
Store at -20°C. Avoid freeze / thaw cycles. Buffer: PBS with 0.02% sodium azide, 50% glycerol, pH7.3.

## Product Images

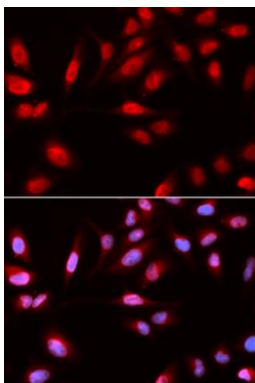
---



Western blot analysis of extracts of various cell lines, using PDPK1 Rabbit pAb (CAB1665) at 1:5000 dilution. Secondary antibody: HRP Goat Anti-Rabbit IgG (H+L) (CABS014) at 1:10000 dilution. Lysates/proteins: 25ug per lane. Blocking buffer: 3% nonfat dry milk in TBST. Detection: ECL Basic Kit (CABM00020). Exposure time: 1s.



Immunohistochemistry of paraffin-embedded rat brain using PDPK1 antibody (CAB1665) at dilution of 1:200 (40x lens).



Immunofluorescence analysis of U2OS cells using PDPK1 antibody (CAB1665). Blue: DAPI for nuclear staining.