

# CREB3L3 Rabbit Polyclonal Antibody



CAB16655

## Product Information

### Size:

20uL, 50uL, 100uL, 200uL

### Observed MW:

70KDa

### Calculated MW:

35kDa/48kDa/49kDa

### Applications:

WB

### Reactivity:

Human, Rat

## Antibody Information

### Recommended dilutions:

WB 1:500 - 1:2000

### Source:

Rabbit

### Isotype:

IgG

### Purification:

Affinity purification

## Protein Background

This gene encodes a member of the basic-leucine zipper family and the AMP-dependent transcription factor family. The encoded protein is localized to the endoplasmic reticulum and acts as a transcription factor activated by cyclic AMP stimulation. The encoded protein binds the cyclic AMP response element (CRE) and the box-B element and has been linked to acute inflammatory response, hepatocellular carcinoma, triglyceride metabolism, and hepcidin expression. Alternative splicing results in multiple transcript variants.

## Immunogen information

### Gene ID:

84699

### Uniprot

Q68CJ9

### Synonyms:

CREB3L3; CREB-H; CREBH; HYST1481

### Immunogen:

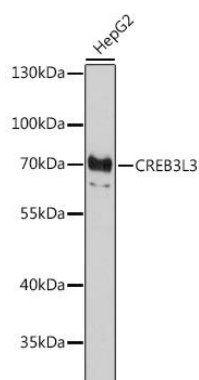
Recombinant fusion protein containing a sequence corresponding to amino acids 371-460 of human CREB3L3 (NP\_001258924.1).

### Storage:

Store at -20°C. Avoid freeze / thaw cycles. Buffer: PBS with 0.02% sodium azide, 50% glycerol, pH7.3.

## Product Images

---



Western blot analysis of extracts of HepG2 cells, using CREB3L3 antibody (CAB16655) at 1:1000 dilution. Secondary antibody: HRP Goat Anti-Rabbit IgG (H+L) (CABS014) at 1:10000 dilution. Lysates/proteins: 25ug per lane. Blocking buffer: 3% nonfat dry milk in TBST. Detection: ECL Basic Kit (CABM00020). Exposure time: 90s.