

# DRP1 Rabbit Polyclonal Antibody



CAB16661

## Product Information

### Size:

20uL, 50uL, 100uL, 200uL

### Observed MW:

82kDa

### Calculated MW:

60kDa/78kDa/79kDa/80kDa/  
81kDa/82kDa/83kDa

### Applications:

WB IF

### Reactivity:

Human, Mouse, Rat

## Protein Background

This gene encodes a member of the dynamin superfamily of GTPases. The encoded protein mediates mitochondrial and peroxisomal division, and is involved in developmentally regulated apoptosis and programmed necrosis. Dysfunction of this gene is implicated in several neurological disorders, including Alzheimer's disease. Mutations in this gene are associated with the autosomal dominant disorder, encephalopathy, lethal, due to defective mitochondrial and peroxisomal fission (EMPF). Alternative splicing results in multiple transcript variants encoding different isoforms.

## Immunogen information

### Gene ID:

10059

### Uniprot

O00429

### Synonyms:

DNM1L; DLP1; DRP1; DVLP; DYMPLE; EMPF; EMPF1; HDYNIV

## Antibody Information

### Recommended dilutions:

WB 1:1000 - 1:3000 IF 1:50  
- 1:200

### Source:

Rabbit

### Isotype:

IgG

### Purification:

Affinity purification

### Immunogen:

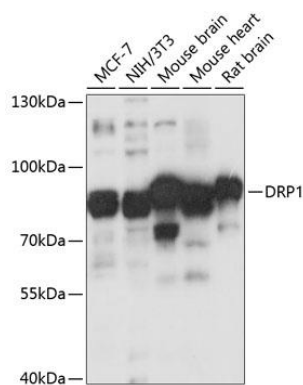
Recombinant protein of human DRP1

### Storage:

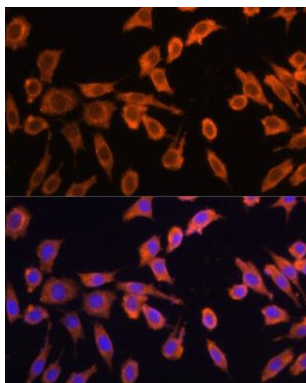
Store at -20°C. Avoid freeze / thaw cycles. Buffer: PBS with 0.02% sodium azide, 50% glycerol, pH7.3.

## Product Images

---



Western blot analysis of extracts of various cell lines, using DRP1 antibody (CAB16661) at 1:3000 dilution. Secondary antibody: HRP Goat Anti-Rabbit IgG (H+L) (CABS014) at 1:10000 dilution. Lysates/proteins: 25ug per lane. Blocking buffer: 3% nonfat dry milk in TBST. Detection: ECL Basic Kit (CABM00020). Exposure time: 30s.



Immunofluorescence analysis of L929 cells using DRP1 Polyclonal Antibody (CAB16661) at dilution of 1:100 (40x lens). Blue: DAPI for nuclear staining.