

SCN5A Rabbit Polyclonal Antibody



CAB16665

Product Information

Size:

20uL, 50uL, 100uL, 200uL

Observed MW:

226kDa

Calculated MW:

221kDa/223kDa/224kDa/226kDa

Applications:

WB

Reactivity:

Mouse

Protein Background

The protein encoded by this gene is an integral membrane protein and tetrodotoxin-resistant voltage-gated sodium channel subunit. This protein is found primarily in cardiac muscle and is responsible for the initial upstroke of the action potential in an electrocardiogram. Defects in this gene are a cause of long QT syndrome type 3 (LQT3), an autosomal dominant cardiac disease. Alternative splicing results in several transcript variants encoding different isoforms.

Immunogen information

Gene ID:

6331

Uniprot

Q14524

Synonyms:

SCN5A; CDCD2; CMD1E; CMPD2; HB1; HB2; HBBD; HH1; ICCD; IVF; LQT3; Nav1.5; PFHB1; SSS1; VF1

Antibody Information

Recommended dilutions:

WB 1:500 - 1:2000

Source:

Rabbit

Isotype:

IgG

Purification:

Affinity purification

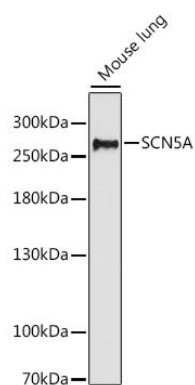
Immunogen:

A synthetic peptide of mouse SCN5A

Storage:

Store at -20°C. Avoid freeze / thaw cycles. Buffer: PBS with 0.02% sodium azide, 50% glycerol, pH7.3.

Product Images



Western blot analysis of extracts of mouse lung, using SCN5A antibody (CAB16665) at 1:1000 dilution. Secondary antibody: HRP Goat Anti-Rabbit IgG (H+L) (CABS014) at 1:10000 dilution. Lysates/proteins: 25ug per lane. Blocking buffer: 3% nonfat dry milk in TBST. Detection: ECL Basic Kit (CABM00020). Exposure time: 180s.