

ESR1 Rabbit Polyclonal Antibody



CAB16668

Product Information

Size:

20uL, 50uL, 100uL, 200uL

Observed MW:

75kDa

Calculated MW:

35kDa/47kDa/53kDa/66kDa

Applications:

WB IF

Reactivity:

Human, Mouse, Rat

Antibody Information

Recommended dilutions:

WB 1:1000 - 1:4000 IF 1:50
- 1:200

Source:

Rabbit

Isotype:

IgG

Purification:

Affinity purification

Protein Background

This gene encodes an estrogen receptor, a ligand-activated transcription factor composed of several domains important for hormone binding, DNA binding, and activation of transcription. The protein localizes to the nucleus where it may form a homodimer or a heterodimer with estrogen receptor 2. Estrogen and its receptors are essential for sexual development and reproductive function, but also play a role in other tissues such as bone. Estrogen receptors are also involved in pathological processes including breast cancer, endometrial cancer, and osteoporosis. Alternative promoter usage and alternative splicing result in dozens of transcript variants, but the full-length nature of many of these variants has not been determined.

Immunogen information

Gene ID:

2099

Uniprot

P03372

Synonyms:

ESR1; ER; ESR; ESRA; ESTRR; Era; NR3A1; ER alpha

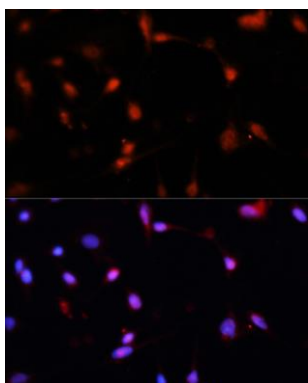
Immunogen:

Recombinant fusion protein containing a sequence corresponding to amino acids 1-190 of human ESR1 (NP_000116.2).

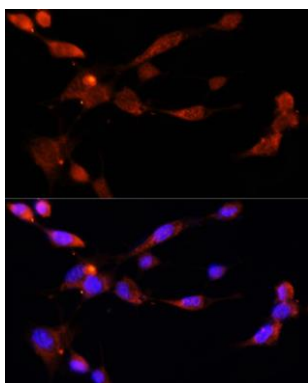
Storage:

Store at -20°C. Avoid freeze / thaw cycles. Buffer: PBS with 0.02% sodium azide, 50% glycerol, pH7.3.

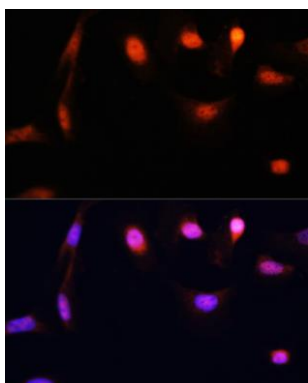
Product Images



Immunofluorescence analysis of C6 cells using ESR1 antibody (CAB16668) at dilution of 1:100. Blue: DAPI for nuclear staining.



Immunofluorescence analysis of NIH/3T3 cells using ESR1 antibody (CAB16668) at dilution of 1:100. Blue: DAPI for nuclear staining.



Immunofluorescence analysis of U-2OS cells using ESR1 antibody (CAB16668) at dilution of 1:100. Blue: DAPI for nuclear staining.