

ROS1 Rabbit Polyclonal Antibody



CAB16669

Product Information

Size:

20uL, 50uL, 100uL, 200uL

Observed MW:

263kDa

Calculated MW:

263kDa

Applications:

WB

Reactivity:

Human, Mouse

Protein Background

This proto-oncogene, highly-expressed in a variety of tumor cell lines, belongs to the sevenless subfamily of tyrosine kinase insulin receptor genes. The protein encoded by this gene is a type I integral membrane protein with tyrosine kinase activity. The protein may function as a growth or differentiation factor receptor.

Immunogen information

Gene ID:

6098

Uniprot

P08922

Synonyms:

ROS1; MCF3; ROS; c-ros-1

Antibody Information

Recommended dilutions:

WB 1:500 - 1:2000

Source:

Rabbit

Isotype:

IgG

Purification:

Affinity purification

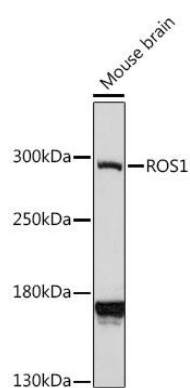
Immunogen:

A synthetic peptide corresponding to a sequence within amino acids 2100-2200 of human ROS1 (NP_002935.2).

Storage:

Store at -20°C. Avoid freeze / thaw cycles. Buffer: PBS with 0.02% sodium azide, 50% glycerol, pH7.3.

Product Images



Western blot analysis of extracts of mouse brain, using ROS1 antibody (CAB16669) at 1:1000 dilution. Secondary antibody: HRP Goat Anti-Mouse IgG (H+L) (CABS003) at 1:10000 dilution. Lysates/proteins: 25ug per lane. Blocking buffer: 3% nonfat dry milk in TBST. Detection: ECL Enhanced Kit (CABM00021). Exposure time: 3min.