

CORO2B Rabbit Polyclonal Antibody



CAB16670

Product Information

Size:

20uL, 50uL, 100uL, 200uL

Observed MW:

Calculated MW:

54kDa

Applications:

WB

Reactivity:

Human, Mouse, Rat

Antibody Information

Recommended dilutions:

WB 1:500 - 1:2000

Source:

Rabbit

Isotype:

IgG

Purification:

Affinity purification

Protein Background

Immunogen information

Gene ID:

10391

Uniprot

Q9UQ03

Synonyms:

CORO2B; CLIPINC

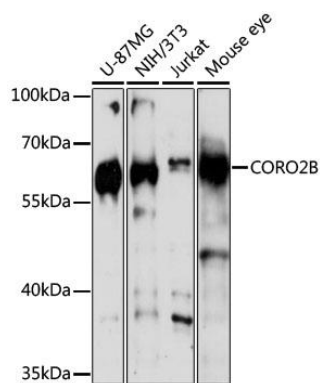
Immunogen:

Recombinant fusion protein containing a sequence corresponding to amino acids 361-480 of human CORO2B (NP_006082.3).

Storage:

Store at -20°C. Avoid freeze / thaw cycles. Buffer: PBS with 0.02% sodium azide, 50% glycerol, pH7.3.

Product Images



Western blot analysis of extracts of various cell lines, using CORO2B antibody (CAB16670) at 1:3000 dilution. Secondary antibody: HRP Goat Anti-Rabbit IgG (H+L) (CABS014) at 1:10000 dilution. Lysates/proteins: 25ug per lane. Blocking buffer: 3% nonfat dry milk in TBST. Detection: ECL Basic Kit (CABM00020). Exposure time: 60s.