

# ASC / TMS1 Rabbit Polyclonal Antibody



CAB16672

## Product Information

### Size:

20uL, 50uL, 100uL, 200uL

### Observed MW:

22kDa

### Calculated MW:

15kDa/19kDa/21kDa

### Applications:

WB IHC IF IP

### Reactivity:

Human, Mouse, Rat

## Antibody Information

### Recommended dilutions:

WB 1:500 - 1:2000 IHC 1:50

- 1:200 IF 1:50 - 1:200 IP

1:50 - 1:200

### Source:

Rabbit

### Isotype:

IgG

### Purification:

Affinity purification

## Protein Background

This gene encodes an adaptor protein that is composed of two protein-protein interaction domains: a N-terminal PYRIN-PAAD-DAPIN domain (PYD) and a C-terminal caspase-recruitment domain (CARD). The PYD and CARD domains are members of the six-helix bundle death domain-fold superfamily that mediates assembly of large signaling complexes in the inflammatory and apoptotic signaling pathways via the activation of caspase. In normal cells, this protein is localized to the cytoplasm; however, in cells undergoing apoptosis, it forms ball-like aggregates near the nuclear periphery. Two transcript variants encoding different isoforms have been found for this gene.

## Immunogen information

### Gene ID:

29108

### Uniprot

Q9ULZ3

### Synonyms:

PYCARD; ASC; CARD5; TMS; TMS-1; TMS1; PYD and CARD domain containing; ASC / TMS1

### Immunogen:

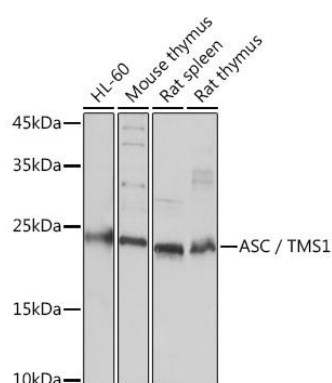
Recombinant protein of human ASC / TMS1

### Storage:

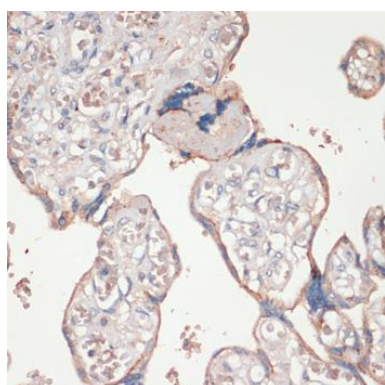
Store at -20°C. Avoid freeze / thaw cycles. Buffer: PBS with 0.02% sodium azide, 50% glycerol, pH7.3.

## Product Images

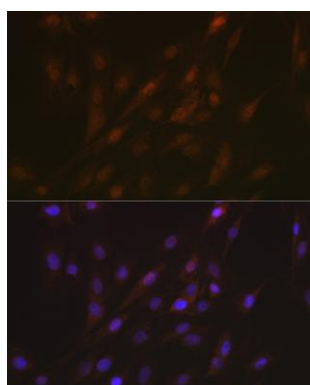
---



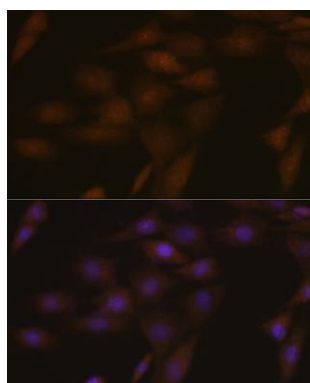
Western blot analysis of extracts of various cell lines, using ASC / TMS1 Rabbit pAb (CAB16672) at 1:3000 dilution. Secondary antibody: HRP Goat Anti-Rabbit IgG (H+L) (CABS014) at 1:10000 dilution. Lysates/proteins: 25ug per lane. Blocking buffer: 3% nonfat dry milk in TBST. Detection: ECL Basic Kit (CABM00020). Exposure time: 10s.



Immunohistochemistry of paraffin-embedded human placenta using ASC / TMS1 antibody (CAB16672) at dilution of 1:100 (40x lens).



Immunofluorescence analysis of C6 cells using ASC / TMS1 Rabbit pAb (CAB16672) at dilution of 1:100 (40x lens). Blue: DAPI for nuclear staining.



Immunofluorescence analysis of NIH-3T3 cells using ASC / TMS1 Rabbit pAb (CAB16672) at dilution of 1:100 (40x lens). Blue: DAPI for nuclear staining.