

FBN1 Rabbit Polyclonal Antibody



CAB16677

Product Information

Size:

20uL, 50uL, 100uL, 200uL

Observed MW:

Refer to figures

Calculated MW:

312kDa

Applications:

IF

Reactivity:

Mouse, Rat

Antibody Information

Recommended dilutions:

IF 1:50 - 1:200

Source:

Rabbit

Isotype:

IgG

Purification:

Affinity purification

Protein Background

This gene encodes a member of the fibrillin family of proteins. The encoded preproprotein is proteolytically processed to generate two proteins including the extracellular matrix component fibrillin-1 and the protein hormone asprosin. Fibrillin-1 is an extracellular matrix glycoprotein that serves as a structural component of calcium-binding microfibrils. These microfibrils provide force-bearing structural support in elastic and nonelastic connective tissue throughout the body. Asprosin, secreted by white adipose tissue, has been shown to regulate glucose homeostasis. Mutations in this gene are associated with Marfan syndrome and the related MASS phenotype, as well as ectopia lentis syndrome, Weill-Marchesani syndrome, Shprintzen-Goldberg syndrome and neonatal progeroid syndrome.

Immunogen information

Gene ID:

2200

Uniprot

P35555

Synonyms:

FBN1; ACMICD; ECTOL1; FBN; GPHYS2; MASS; MFLS; MFS1; OCTD; SGS; SSKS; WMS; WMS2

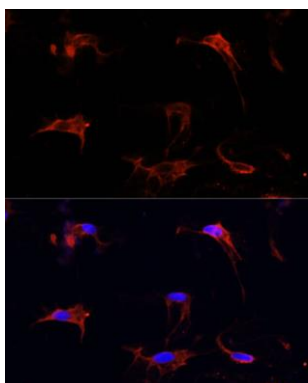
Immunogen:

Recombinant fusion protein containing a sequence corresponding to amino acids 360-460 of human FBN1 (NP_000129.3).

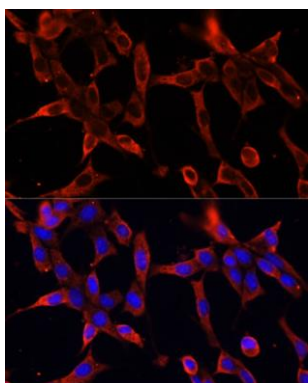
Storage:

Store at -20°C. Avoid freeze / thaw cycles. Buffer: PBS with 0.02% sodium azide, 50% glycerol, pH7.3.

Product Images



Immunofluorescence analysis of C6 cells using FBN1 Polyclonal Antibody (CAB16677) at dilution of 1:100 (40x lens). Blue: DAPI for nuclear staining.



Immunofluorescence analysis of NIH-3T3 cells using FBN1 Polyclonal Antibody (CAB16677) at dilution of 1:100 (40x lens). Blue: DAPI for nuclear staining.