

# LSM14A Rabbit Polyclonal Antibody



CAB16682

---

## Product Information

### Size:

20uL, 50uL, 100uL, 200uL

### Observed MW:

50kDa

### Calculated MW:

46kDa/50kDa

### Applications:

WB IF

### Reactivity:

Human, Mouse, Rat

## Protein Background

Sm-like proteins were identified in a variety of organisms based on sequence homology with the Sm protein family (see SNRPD2; 601061). Sm-like proteins contain the Sm sequence motif, which consists of 2 regions separated by a linker of variable length that folds as a loop. The Sm-like proteins are thought to form a stable heteromer present in tri-snRNP particles, which are important for pre-mRNA splicing.[supplied by OMIM, Mar 2008]

## Immunogen information

### Gene ID:

26065

### Uniprot

Q8ND56

### Synonyms:

LSM14A; C19orf13; FAM61A; RAP55; RAP55A

## Antibody Information

### Recommended dilutions:

WB 1:500 - 1:2000 IF 1:50 - 1:200

### Source:

Rabbit

### Isotype:

IgG

### Purification:

Affinity purification

### Immunogen:

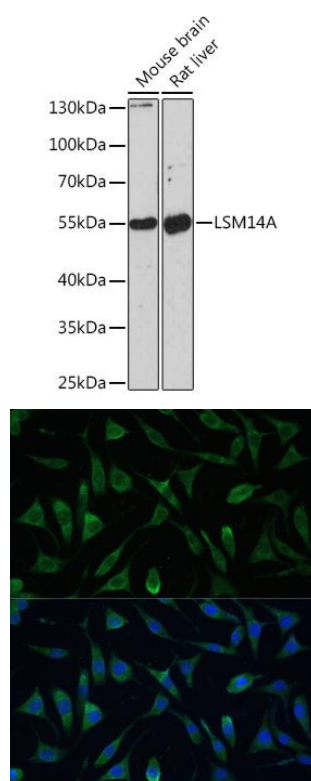
A synthetic peptide of human LSM14A

### Storage:

Store at -20°C. Avoid freeze / thaw cycles. Buffer: PBS with 0.02% sodium azide, 50% glycerol, pH7.3.

## Product Images

---



Western blot analysis of extracts of various cell lines, using LSM14A Rabbit pAb (CAB16682) at 1:1000 dilution. Secondary antibody: HRP Goat Anti-Rabbit IgG (H+L) (CABS014) at 1:10000 dilution. Lysates/proteins: 25ug per lane. Blocking buffer: 3% nonfat dry milk in TBST. Detection: ECL Enhanced Kit (CABM00021). Exposure time: 90s.

Immunofluorescence analysis of L929 cells using LSM14A antibody (CAB16682) at dilution of 1:100. Blue: DAPI for nuclear staining.