

# LMNB1 Rabbit Polyclonal Antibody



CAB16685

---

## Product Information

### Size:

20uL, 50uL, 100uL, 200uL

### Observed MW:

70kDa

### Calculated MW:

66kDa

### Applications:

WB IF IP

### Reactivity:

Human, Mouse, Rat

## Protein Background

This gene encodes one of the two B-type lamin proteins and is a component of the nuclear lamina. A duplication of this gene is associated with autosomal dominant adult-onset leukodystrophy (ADLD). Alternative splicing results in multiple transcript variants.

## Immunogen information

### Gene ID:

4001

### Uniprot

P20700

### Synonyms:

ADLD; LMN; LMN2; LMNB; Lamin B1; LMNB1; lamin-B1

## Antibody Information

### Recommended dilutions:

WB 1:500 - 1:2000 IF 1:50 - 1:200 IP 1:50 - 1:200

### Source:

Rabbit

### Isotype:

IgG

### Purification:

Affinity purification

### Immunogen:

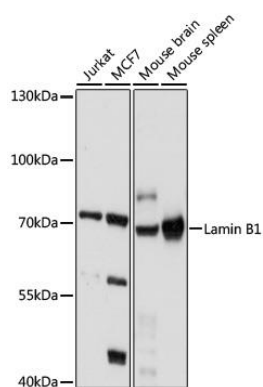
Recombinant protein of human LMNB1

### Storage:

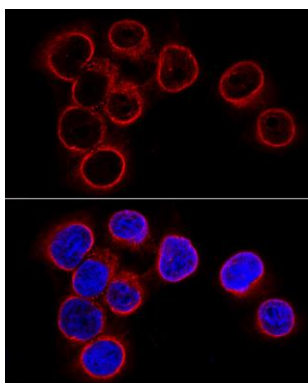
Store at -20°C. Avoid freeze / thaw cycles. Buffer: PBS with 0.02% sodium azide, 50% glycerol, pH7.3.

## Product Images

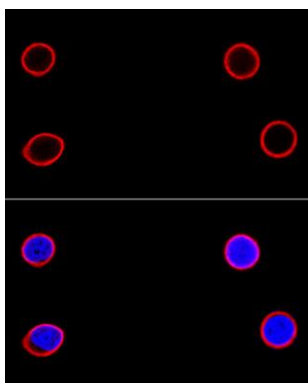
---



Western blot analysis of extracts of various cell lines, using Lamin B1 antibody (CAB16685) at 1:1000 dilution. Secondary antibody: HRP Goat Anti-Rabbit IgG (H+L) (CABS014) at 1:10000 dilution. Lysates/proteins: 25ug per lane. Blocking buffer: 3% nonfat dry milk in TBST. Detection: ECL Basic Kit (CABM00020). Exposure time: 10s.



Confocal immunofluorescence analysis of HeLa cells using LMNB1 antibody (CAB16685) at dilution of 1:100 (60x lens). Blue: DAPI for nuclear staining.



Confocal immunofluorescence analysis of MCF-7 cells using LMNB1 antibody (CAB16685) at dilution of 1:100 (60x lens). Blue: DAPI for nuclear staining.