

ERK1 / ERK2 Rabbit Polyclonal Antibody



CAB16686

Product Information

Size:

50uL, 100uL, 200uL

Observed MW:

42KDa/44KDa

Calculated MW:

36kDa/41kDa/38kDa/40kDa/
43kDa

Applications:

WB IHC IF

Reactivity:

Human, Mouse, Rat

Protein Background

MAP kinases, also known as extracellular signal-regulated kinases (ERKs), act as an integration point for multiple biochemical signals, and are involved in a wide variety of cellular processes such as proliferation, differentiation, transcription regulation and development. The activation of this kinase requires its phosphorylation by upstream kinases. Upon activation, this kinase translocates to the nucleus of the stimulated cells, where it phosphorylates nuclear targets.

Immunogen information

Gene ID:

5594/5595

Uniprot

P28482/P27361

Synonyms:

MAPK1/MAPK3

Antibody Information

Recommended dilutions:

WB 1:1000 - 1:2000 IHC
1:50 - 1:200 IF 1:50 - 1:200

Source:

Rabbit

Isotype:

IgG

Purification:

Affinity purification

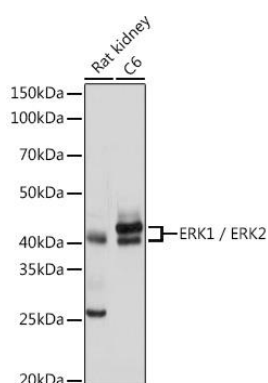
Immunogen:

A synthetic peptide corresponding to a sequence within amino acids 200-300 of human ERK1 / ERK2 (NP_620407.1/NP_002737.2).

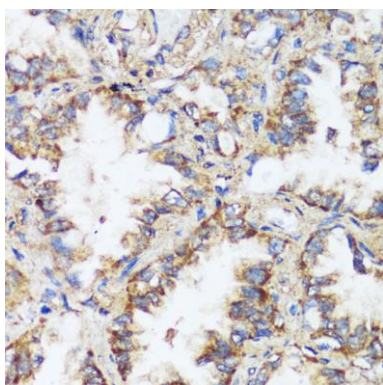
Storage:

Store at -20°C. Avoid freeze / thaw cycles. Buffer: PBS with 0.02% sodium azide, 50% glycerol, pH7.3.

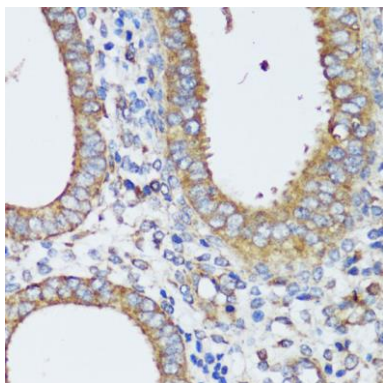
Product Images



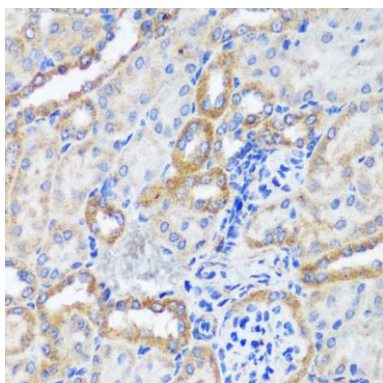
Western blot analysis of extracts of various cell lines, using ERK1 / ERK2 Rabbit pAb (CAB16686) at 1:1000 dilution. Secondary antibody: HRP Goat Anti-Rabbit IgG (H+L) (CABS014) at 1:10000 dilution. Lysates/proteins: 25ug per lane. Blocking buffer: 3% nonfat dry milk in TBST. Detection: ECL Basic Kit (CABM00020). Exposure time: 5s.



Immunohistochemistry of paraffin-embedded human lung cancer using ERK1 / ERK2 antibody (CAB16686) at dilution of 1:200 (40x lens).



Immunohistochemistry of paraffin-embedded human uterine cancer using ERK1 / ERK2 antibody (CAB16686) at dilution of 1:200 (40x lens).



Immunohistochemistry of paraffin-embedded mouse kidney using ERK1 / ERK2 antibody (CAB16686) at dilution of 1:200 (40x lens).