

# CCNB1IP1 Rabbit Polyclonal Antibody



CAB16693

---

## Product Information

### Size:

20uL, 50uL, 100uL, 200uL

### Observed MW:

31kDa

### Calculated MW:

31kDa

### Applications:

WB

### Reactivity:

Mouse

## Antibody Information

### Recommended dilutions:

WB 1:500 - 1:2000

### Source:

Rabbit

### Isotype:

IgG

### Purification:

Affinity purification

## Protein Background

HEI10 is a member of the E3 ubiquitin ligase family and functions in progression of the cell cycle through G(2)/M.

## Immunogen information

### Gene ID:

57820

### Uniprot

Q9NPC3

### Synonyms:

CCNB1IP1; C14orf18; HEI10

### Immunogen:

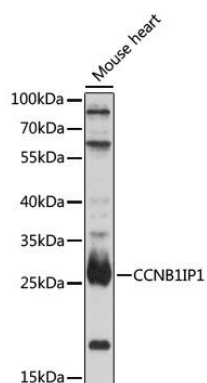
A synthetic peptide of human CCNB1IP1.

### Storage:

Store at -20°C. Avoid freeze / thaw cycles. Buffer: PBS with 0.02% sodium azide, 50% glycerol, pH7.3.

## Product Images

---



Western blot analysis of extracts of mouse heart, using CCNB1IP1 antibody (CAB16693) at 1:1000 dilution. Secondary antibody: HRP Goat Anti-Rabbit IgG (H+L) (CABS014) at 1:10000 dilution. Lysates/proteins: 25ug per lane. Blocking buffer: 3% nonfat dry milk in TBST. Detection: ECL Enhanced Kit (CABM00021). Exposure time: 90s.