

RRN3 Rabbit Polyclonal Antibody



CAB16705

Product Information

Size:

20uL, 50uL, 100uL, 200uL

Observed MW:

Refer to figures

Calculated MW:

34kDa/53kDa/70kDa/74kDa

Applications:

WB

Reactivity:

Human, Mouse

Antibody Information

Recommended dilutions:

WB 1:500 - 1:1000

Source:

Rabbit

Isotype:

IgG

Purification:

Affinity purification

Protein Background

Immunogen information

Gene ID:

54700

Uniprot

Q9NYV6

Synonyms:

RRN3; A-270G1.2; TIFIA; RRN3 homolog

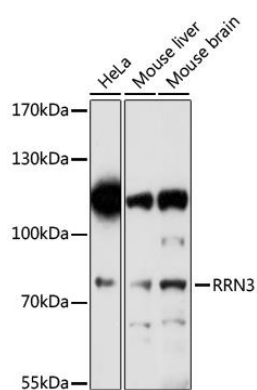
Immunogen:

A synthetic Peptide of human RRN3

Storage:

Store at -20°C. Avoid freeze / thaw cycles. Buffer: PBS with 0.02% sodium azide, 50% glycerol, pH7.3.

Product Images



Western blot analysis of extracts of various cell lines, using RRN3 antibody (CAB16705) at 1:1000 dilution. Secondary antibody: HRP Goat Anti-Rabbit IgG (H+L) (CABS014) at 1:10000 dilution. Lysates/proteins: 25ug per lane. Blocking buffer: 3% nonfat dry milk in TBST. Detection: ECL Enhanced Kit (CABM00021). Exposure time: 180s.