

MARK2 Rabbit Polyclonal Antibody



CAB16706

Product Information

Size:

20uL, 50uL, 100uL, 200uL

Observed MW:

78kDa

Calculated MW:

77-87kDa

Applications:

WB IF

Reactivity:

Human, Mouse, Rat

Protein Background

This gene encodes a member of the Par-1 family of serine/threonine protein kinases. The protein is an important regulator of cell polarity in epithelial and neuronal cells, and also controls the stability of microtubules through phosphorylation and inactivation of several microtubule-associating proteins. The protein localizes to cell membranes. Multiple transcript variants encoding different isoforms have been found for this gene.

Immunogen information

Gene ID:

2011

Uniprot

Q7KZ17

Synonyms:

MARK2; EMK-1; EMK1; PAR-1; Par-1b; Par1b

Antibody Information

Recommended dilutions:

WB 1:500 - 1:2000 IF 1:50 - 1:100

Source:

Rabbit

Isotype:

IgG

Purification:

Affinity purification

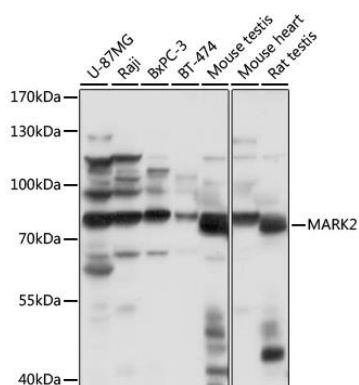
Immunogen:

Recombinant protein of human MARK2

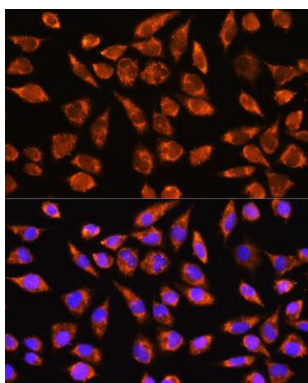
Storage:

Store at -20°C. Avoid freeze / thaw cycles. Buffer: PBS with 0.02% sodium azide, 50% glycerol, pH7.3.

Product Images



Western blot analysis of extracts of various cell lines, using MARK2 antibody (CAB16706) at 1:1000 dilution. Secondary antibody: HRP Goat Anti-Rabbit IgG (H+L) (CABS014) at 1:10000 dilution. Lysates/proteins: 25ug per lane. Blocking buffer: 3% nonfat dry milk in TBST. Detection: ECL Basic Kit (CABM00020). Exposure time: 1s.



Immunofluorescence analysis of L929 cells using MARK2 antibody (CAB16706) at dilution of 1:100. Blue: DAPI for nuclear staining.