

# CCL4 Rabbit Polyclonal Antibody



CAB1671

---

## Product Information

### Size:

20uL, 50uL, 100uL, 200uL

### Observed MW:

10kDa

### Calculated MW:

10kDa

### Applications:

WB IHC

### Reactivity:

Human

## Protein Background

The protein encoded by this gene is a mitogen-inducible monokine and is one of the major HIV-suppressive factors produced by CD8+ T-cells. The encoded protein is secreted and has chemokinetic and inflammatory functions.

## Immunogen information

### Gene ID:

6351

### Uniprot

P13236

### Synonyms:

CCL4; ACT2; AT744.1; G-26; HC21; LAG-1; LAG1; MIP-1-beta; MIP1B; MIP1B1; SCYA2; SCYA4

## Antibody Information

### Recommended dilutions:

WB 1:500 - 1:2000 IHC 1:50  
- 1:200

### Source:

Rabbit

### Isotype:

IgG

### Purification:

Affinity purification

### Immunogen:

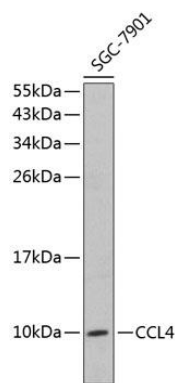
A synthetic peptide corresponding to a sequence within amino acids 30 to the C-terminus of human CCL4 (NP\_002975.1).

### Storage:

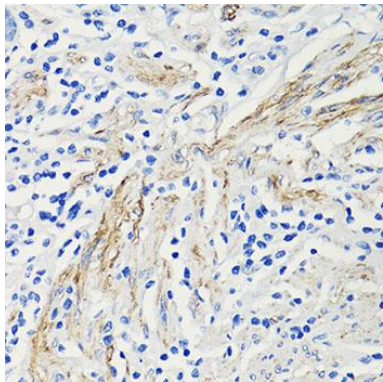
Store at -20°C. Avoid freeze / thaw cycles. Buffer: PBS with 0.02% sodium azide, 50% glycerol, pH7.3.

## Product Images

---



Western blot analysis of extracts of SGC-7901 cells, using CCL4 antibody (CAB1671). Secondary antibody: HRP Goat Anti-Rabbit IgG (H+L) (CABS014) at 1:10000 dilution. Lysates/proteins: 25ug per lane. Blocking buffer: 3% nonfat dry milk in TBST.



Immunohistochemistry of paraffin-embedded human colon using CCL4 antibody (CAB1671) at dilution of 1:100 (40x lens).