

# PLA2G5 Rabbit Polyclonal Antibody



CAB16711

## Product Information

### Size:

20uL, 50uL, 100uL, 200uL

### Observed MW:

Refer to figures

### Calculated MW:

15kDa

### Applications:

IF

### Reactivity:

Mouse

## Protein Background

This gene is a member of the secretory phospholipase A2 family. It is located in a tightly-linked cluster of secretory phospholipase A2 genes on chromosome 1. The encoded enzyme catalyzes the hydrolysis of membrane phospholipids to generate lysophospholipids and free fatty acids including arachidonic acid. It preferentially hydrolyzes linoleoyl-containing phosphatidylcholine substrates. Secretion of this enzyme is thought to induce inflammatory responses in neighboring cells. Alternatively spliced transcript variants have been found, but their full-length nature has not been determined.

## Immunogen information

### Gene ID:

5322

### Uniprot

P39877

### Synonyms:

PLA2G5; FRFB; GV-PLA2; PLA2-10; hVPLA(2)

## Antibody Information

### Recommended dilutions:

IF 1:50 - 1:200

### Source:

Rabbit

### Isotype:

IgG

### Purification:

Affinity purification

### Immunogen:

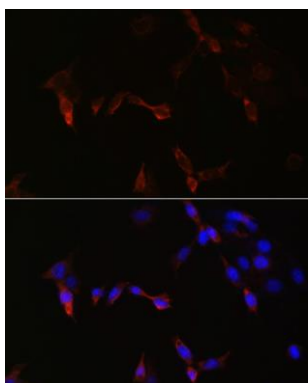
Recombinant fusion protein containing a sequence corresponding to amino acids 1-138 of human PLA2G5 (NP\_000920.1).

### Storage:

Store at -20°C. Avoid freeze / thaw cycles. Buffer: PBS with 0.02% sodium azide, 50% glycerol, pH7.3.

## Product Images

---



Immunofluorescence analysis of NIH/3T3 cells using PLA2G5 antibody (CAB16711) at dilution of 1:100. Blue: DAPI for nuclear staining.