

# SATB2 Rabbit Polyclonal Antibody



CAB16721

## Product Information

### Size:

50uL, 100uL, 200uL

### Observed MW:

82kDa

### Calculated MW:

69kDa/82kDa

### Applications:

WB IHC

### Reactivity:

Human, Rat

## Protein Background

This gene encodes a DNA binding protein that specifically binds nuclear matrix attachment regions. The encoded protein is involved in transcription regulation and chromatin remodeling. Defects in this gene are associated with isolated cleft palate and cognitive disability. Alternate splicing results in multiple transcript variants that encode the same protein.

## Immunogen information

### Gene ID:

23314

### Uniprot

Q9UPW6

### Synonyms:

SATB2; GLSS

## Antibody Information

### Recommended dilutions:

WB 1:500 - 1:1000 IHC 1:50  
- 1:100

### Source:

Rabbit

### Isotype:

IgG

### Purification:

Affinity purification

### Immunogen:

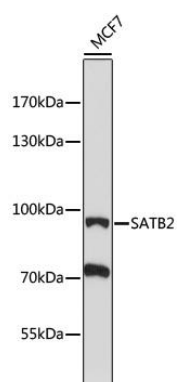
Recombinant fusion protein containing a sequence corresponding to amino acids 540-620 of human SATB2 (NP\_056080.1).

### Storage:

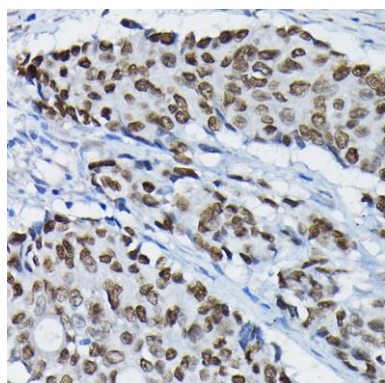
Store at -20°C. Avoid freeze / thaw cycles. Buffer: PBS with 0.02% sodium azide, 50% glycerol, pH7.3.

## Product Images

---



Western blot analysis of extracts of MCF7 cells, using SATB2 antibody (CAB16721) at 1:1000 dilution. Secondary antibody: HRP Goat Anti-Rabbit IgG (H+L) (CABS014) at 1:10000 dilution. Lysates/proteins: 25ug per lane. Blocking buffer: 3% nonfat dry milk in TBST. Detection: ECL Enhanced Kit (CABM00021). Exposure time: 5min.



Immunohistochemistry of paraffin-embedded human colon carcinoma using SATB2 Rabbit pAb (CAB16721) at dilution of 1:100 (40x lens).