

AMOTL2 Rabbit Polyclonal Antibody



CAB16723

Product Information

Size:

20uL, 50uL, 100uL, 200uL

Observed MW:

60kDa/115kDa

Calculated MW:

60kDa/86kDa

Applications:

WB IHC IF

Reactivity:

Human, Mouse

Protein Background

Angiomotin is a protein that binds angiotensin, a circulating inhibitor of the formation of new blood vessels (angiogenesis). Angiomotin mediates angiotensin inhibition of endothelial cell migration and tube formation in vitro. The protein encoded by this gene is related to angiomotin and is a member of the motin protein family. Alternative splicing results in multiple transcript variants of this gene.

Immunogen information

Gene ID:

51421

Uniprot

Q9Y2J4

Synonyms:

AMOTL2; LCCP

Antibody Information

Recommended dilutions:

WB 1:500 - 1:2000 IHC 1:50
- 1:100 IF 1:50 - 1:100

Source:

Rabbit

Isotype:

IgG

Purification:

Affinity purification

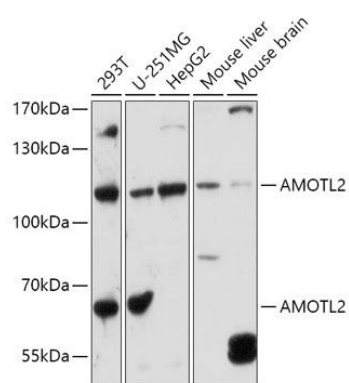
Immunogen:

Recombinant fusion protein containing a sequence corresponding to amino acids 638-837 of human AMOTL2 (NP_001265612.1).

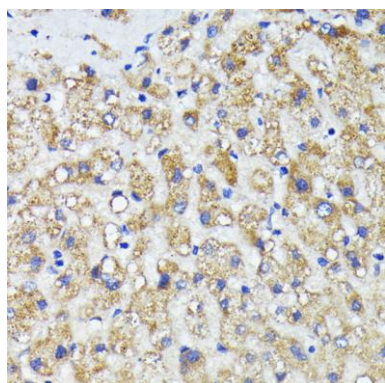
Storage:

Store at -20°C. Avoid freeze / thaw cycles. Buffer: PBS with 0.02% sodium azide, 50% glycerol, pH7.3.

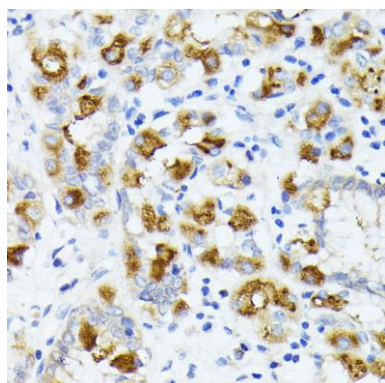
Product Images



Western blot analysis of extracts of various cell lines, using AMOTL2 antibody (CAB16723) at 1:1000 dilution. Secondary antibody: HRP Goat Anti-Rabbit IgG (H+L) (CABS014) at 1:10000 dilution. Lysates/proteins: 25ug per lane. Blocking buffer: 3% nonfat dry milk in TBST. Detection: ECL Basic Kit (CABM00020). Exposure time: 30s.



Immunohistochemistry of paraffin-embedded human liver cancer using AMOTL2 antibody (CAB16723) at dilution of 1:200 (40x lens).



Immunohistochemistry of paraffin-embedded human stomach using AMOTL2 antibody (CAB16723) at dilution of 1:200 (40x lens).