

GPR37 Rabbit Polyclonal Antibody



CAB16724

Product Information

Size:

20uL, 50uL, 100uL, 200uL

Observed MW:

67kDa

Calculated MW:

67kDa

Applications:

WB

Reactivity:

Human, Rat

Protein Background

This gene is a member of the G protein-coupled receptor family. The encoded protein contains seven transmembrane domains and is found in cell and endoplasmic reticulum membranes. G protein-coupled receptors are involved in translating outside signals into G protein mediated intracellular effects. This gene product interacts with Parkin and is involved in juvenile Parkinson disease.

Immunogen information

Gene ID:

2861

Uniprot

O15354

Synonyms:

GPR37; EDNRBL; PAELR; hET(B)R-LP

Antibody Information

Recommended dilutions:

WB 1:500 - 1:2000

Source:

Rabbit

Isotype:

IgG

Purification:

Affinity purification

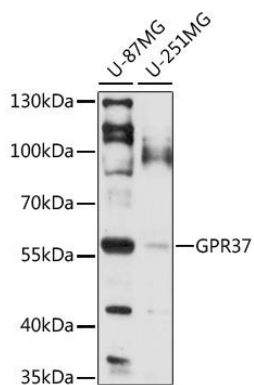
Immunogen:

Recombinant fusion protein containing a sequence corresponding to amino acids 40-180 of human GPR37 (NP_005293.1).

Storage:

Store at -20°C. Avoid freeze / thaw cycles. Buffer: PBS with 0.02% sodium azide, 50% glycerol, pH7.3.

Product Images



Western blot analysis of extracts of various cell lines, using GPR37 antibody (CAB16724) at 1:1000 dilution. Secondary antibody: HRP Goat Anti-Rabbit IgG (H+L) (CABS014) at 1:10000 dilution. Lysates/proteins: 25ug per lane. Blocking buffer: 3% nonfat dry milk in TBST. Detection: ECL Basic Kit (CABM00020). Exposure time: 60s.