

[KO Validated] TFAP4 Rabbit Polyclonal Antibody



CAB16727

Product Information

Size:

20uL, 50uL, 100uL, 200uL

Observed MW:

42kDa

Calculated MW:

38kDa

Applications:

WB IF

Reactivity:

Human, Rat

Antibody Information

Recommended dilutions:

WB 1:200 - 1:2000 IF 1:50 - 1:200

Source:

Rabbit

Isotype:

IgG

Purification:

Affinity purification

Protein Background

Immunogen information

Gene ID:

7023

Uniprot

Q01664

Synonyms:

TFAP4; AP-4; bHLHc41

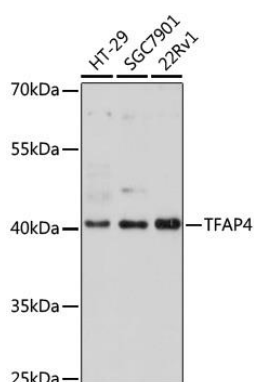
Immunogen:

A synthetic Peptide of human TFAP4

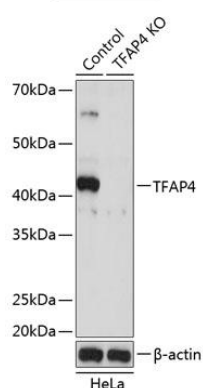
Storage:

Store at -20°C. Avoid freeze / thaw cycles. Buffer: PBS with 0.02% sodium azide, 50% glycerol, pH7.3.

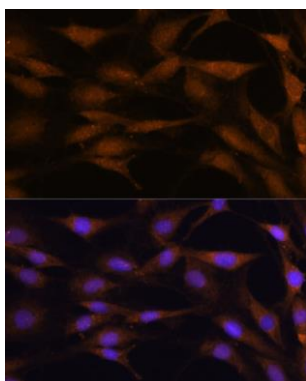
Product Images



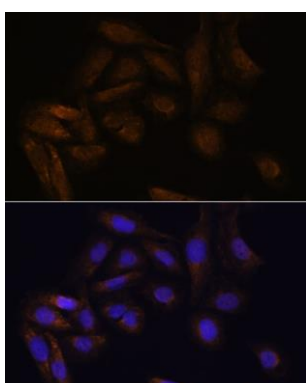
Western blot analysis of extracts of various cell lines, using TFAP4 antibody (CAB16727) at 1:1000 dilution. Secondary antibody: HRP Goat Anti-Rabbit IgG (H+L) (CABS014) at 1:10000 dilution. Lysates/proteins: 25ug per lane. Blocking buffer: 3% nonfat dry milk in TBST. Detection: ECL Basic Kit (CABM00020). Exposure time: 3min.



Western blot analysis of extracts from normal (control) and TFAP4 knockout (KO) HeLa cells, using TFAP4 antibody (CAB16727) at 1:500 dilution. Secondary antibody: HRP Goat Anti-Rabbit IgG (H+L) (CABS014) at 1:10000 dilution. Lysates/proteins: 25ug per lane. Blocking buffer: 3% nonfat dry milk in TBST. Detection: ECL Basic Kit (CABM00020). Exposure time: 60S.



Immunofluorescence analysis of C6 cells using TFAP4 antibody (CAB16727) at dilution of 1:100. Blue: DAPI for nuclear staining.



Immunofluorescence analysis of U-2 OS cells using TFAP4 antibody (CAB16727) at dilution of 1:100. Blue: DAPI for nuclear staining.