

# DNMT1 Rabbit Polyclonal Antibody



CAB16729

## Product Information

### Size:

20uL, 50uL, 100uL, 200uL

### Observed MW:

200kDa

### Calculated MW:

144kDa/183kDa/184kDa

### Applications:

WB IHC IF IP

### Reactivity:

Human, Mouse, Rat

## Antibody Information

### Recommended dilutions:

WB 1:500 - 1:2000 IHC 1:50

- 1:200 IF 1:50 - 1:200 IP

1:50 - 1:100

### Source:

Rabbit

### Isotype:

IgG

### Purification:

Affinity purification

## Protein Background

This gene encodes an enzyme that transfers methyl groups to cytosine nucleotides of genomic DNA. This protein is the major enzyme responsible for maintaining methylation patterns following DNA replication and shows a preference for hemi-methylated DNA. Methylation of DNA is an important component of mammalian epigenetic gene regulation. Aberrant methylation patterns are found in human tumors and associated with developmental abnormalities. Variation in this gene has been associated with cerebellar ataxia, deafness, and narcolepsy, and neuropathy, hereditary sensory, type IE. Alternative splicing results in multiple transcript variants.

## Immunogen information

### Gene ID:

1786

### Uniprot

P26358

### Synonyms:

ADCADN; AIM; CXXC9; DNMT; HSN1E; MCMT; m.Hsa1; DNMT1

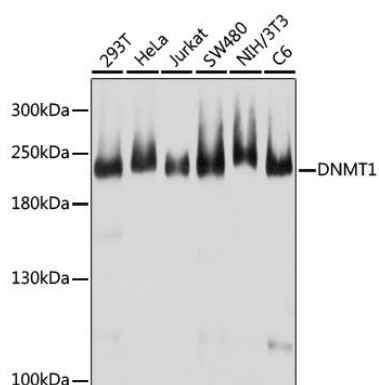
### Immunogen:

Recombinant protein of human DNMT1.

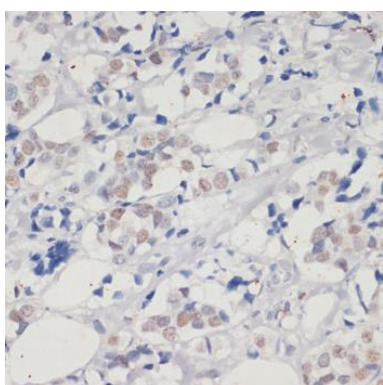
### Storage:

Store at -20°C. Avoid freeze / thaw cycles. Buffer: PBS with 0.02% sodium azide, 50% glycerol, pH7.3.

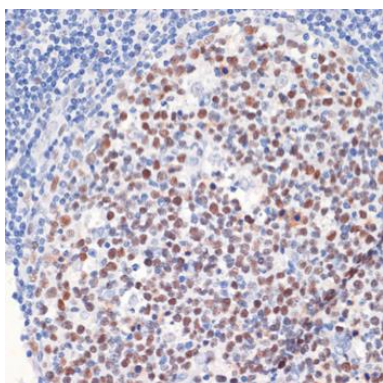
## Product Images



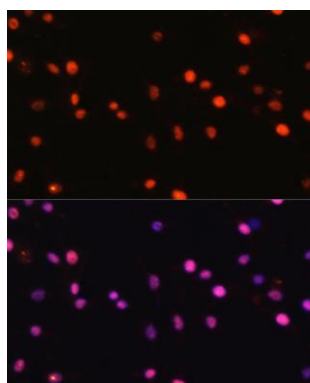
Western blot analysis of extracts of various cell lines, using DNMT1 antibody (CAB16729) at 1:1000 dilution. Secondary antibody: HRP Goat Anti-Rabbit IgG (H+L) (CABS014) at 1:10000 dilution. Lysates/proteins: 25ug per lane. Blocking buffer: 3% nonfat dry milk in TBST. Detection: ECL Basic Kit (CABM00020). Exposure time: 5s.



Immunohistochemistry of paraffin-embedded human breast cancer using DNMT1 antibody (CAB16729) at dilution of 1:200 (40x lens).



Immunohistochemistry of paraffin-embedded human tonsil using DNMT1 antibody (CAB16729) at dilution of 1:200 (40x lens).



Immunofluorescence analysis of C6 cells using DNMT1 antibody (CAB16729) at dilution of 1:100. Blue: DAPI for nuclear staining.