

# ABCA2 Rabbit Polyclonal Antibody



CAB16735

## Product Information

### Size:

20uL, 50uL, 100uL, 200uL

### Observed MW:

270kDa

### Calculated MW:

230kDa/269kDa

### Applications:

WB IHC IF

### Reactivity:

Human, Mouse, Rat

## Antibody Information

### Recommended dilutions:

WB 1:500 - 1:1000

### Source:

Rabbit

### Isotype:

IgG

### Purification:

Affinity purification

## Protein Background

The membrane-associated protein encoded by this gene is a member of the superfamily of ATP-binding cassette (ABC) transporters. ABC proteins transport various molecules across extra- and intracellular membranes. ABC genes are divided into seven distinct subfamilies (ABC1, MDR/TAP, MRP, ALD, OABP, GCN20, White). This protein is a member of the ABC1 subfamily. Members of the ABC1 subfamily comprise the only major ABC subfamily found exclusively in multicellular eukaryotes. This protein is highly expressed in brain tissue and may play a role in macrophage lipid metabolism and neural development. Two transcript variants encoding different isoforms have been found for this gene.

## Immunogen information

### Gene ID:

20

### Uniprot

Q9BZC7

### Synonyms:

ABCA2; ABC2

### Immunogen:

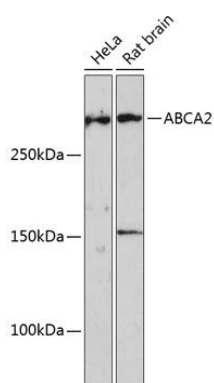
Recombinant fusion protein containing a sequence corresponding to amino acids 2307-2466 of human ABCA2 (NP\_997698.1).

### Storage:

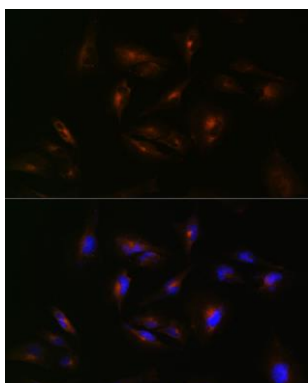
Store at -20°C. Avoid freeze / thaw cycles. Buffer: PBS with 0.02% sodium azide, 50% glycerol, pH7.3.

## Product Images

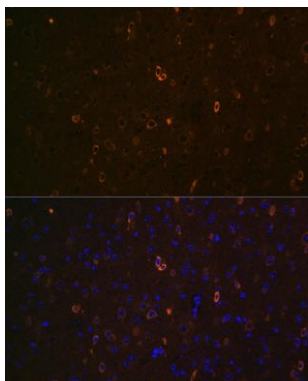
---



Western blot analysis of extracts of various cell lines, using ABCA2 Polyclonal Antibody (CAB16735) at 1:1000 dilution. Secondary antibody: HRP Goat Anti-Rabbit IgG (H+L) (CABS014) at 1:10000 dilution. Lysates/proteins: 25ug per lane. Blocking buffer: 3% nonfat dry milk in TBST. Detection: ECL Enhanced Kit (CABM00021). Exposure time: 3min.



Immunofluorescence analysis of U-251 MG cells using ABCA2 Rabbit pAb (CAB16735) at dilution of 1:100 (40x lens). Blue: DAPI for nuclear staining.



Immunofluorescence analysis of mouse brain using ABCA2 Rabbit pAb (CAB16735) at dilution of 1:100 (40x lens). Blue: DAPI for nuclear staining.