

MAPK1/MAPK3 Rabbit Polyclonal Antibody



CAB16736

Product Information

Size:

20uL, 50uL, 100uL, 200uL

Observed MW:

41kDa/43kDa

Calculated MW:

36kDa/38kDa/40kDa/41kDa/
43kDa

Applications:

WB IF

Reactivity:

Human, Mouse, Rat

Antibody Information

Recommended dilutions:

WB 1:1000 - 1:2000 IF
1:100 - 1:200

Source:

Rabbit

Isotype:

IgG

Purification:

Affinity purification

Protein Background

Immunogen information

Gene ID:

5594/5595

Uniprot

P28482/P27361

Synonyms:

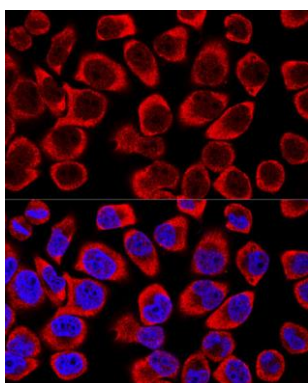
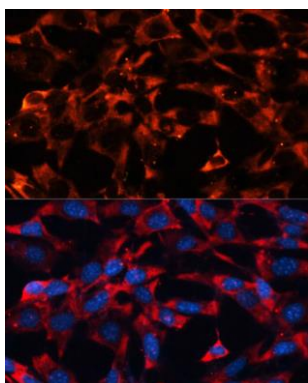
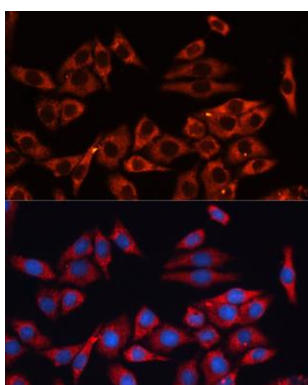
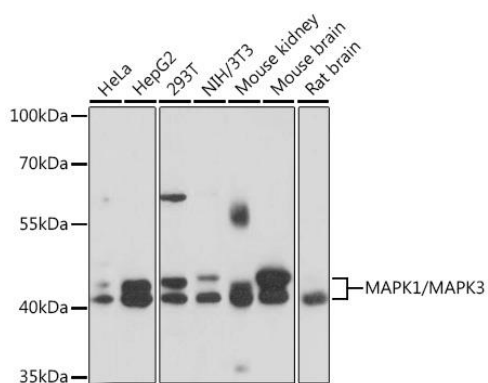
Immunogen:

Recombinant Protein of human MAPK1/MAPK3

Storage:

Store at -20°C. Avoid freeze / thaw cycles. Buffer: PBS with 0.02% sodium azide, 50% glycerol, pH7.3.

Product Images



Western blot analysis of extracts of various cell lines, using MAPK1/MAPK3 antibody (CAB16736) at 1:1000 dilution. Secondary antibody: HRP Goat Anti-Rabbit IgG (H+L) (CABS014) at 1:10000 dilution. Lysates/proteins: 25ug per lane. Blocking buffer: 3% nonfat dry milk in TBST. Detection: ECL Basic Kit (CABM00020). Exposure time: 10s.

Immunofluorescence analysis of HeLa cells using MAPK1/MAPK3 Polyclonal Antibody (CAB16736) at dilution of 1:100 (40x lens). Blue: DAPI for nuclear staining.

Immunofluorescence analysis of NIH-3T3 cells using MAPK1/MAPK3 Polyclonal Antibody (CAB16736) at dilution of 1:100 (40x lens). Blue: DAPI for nuclear staining.

Confocal immunofluorescence analysis of HeLa cells using MAPK1/MAPK3 Polyclonal Antibody (CAB16736) at dilution of 1:200. Blue: DAPI for nuclear staining.