

IL18 Rabbit Polyclonal Antibody



CAB16737

Product Information

Size:

20uL, 50uL, 100uL, 200uL

Observed MW:

23kDa

Calculated MW:

21kDa/22kDa

Applications:

WB IF IP

Reactivity:

Human, Mouse, Rat

Protein Background

The protein encoded by this gene is a proinflammatory cytokine that augments natural killer cell activity in spleen cells, and stimulates interferon gamma production in T-helper type I cells. Alternatively spliced transcript variants encoding different isoforms have been found for this gene.

Immunogen information

Gene ID:

3606

Uniprot

Q14116

Synonyms:

IL18; IGIF; IL-18; IL-1g; IL1F4

Antibody Information

Recommended dilutions:

WB 1:500 - 1:2000 IF 1:50 - 1:200 IP 1:50 - 1:200

Source:

Rabbit

Isotype:

IgG

Purification:

Affinity purification

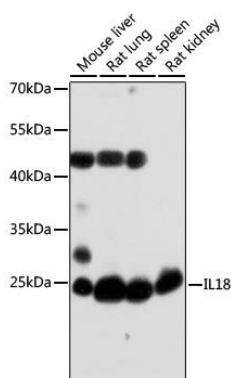
Immunogen:

Recombinant protein of human IL18.

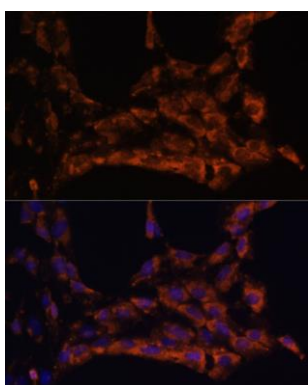
Storage:

Store at -20°C. Avoid freeze / thaw cycles. Buffer: PBS with 0.02% sodium azide, 50% glycerol, pH7.3.

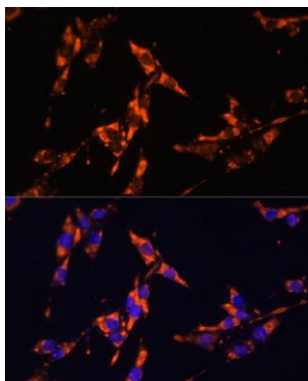
Product Images



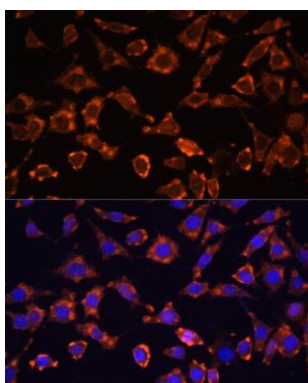
Western blot analysis of extracts of various cell lines, using IL18 antibody (CAB16737) at 1:1000 dilution. Secondary antibody: HRP Goat Anti-Rabbit IgG (H+L) (CABS014) at 1:10000 dilution. Lysates/proteins: 25ug per lane. Blocking buffer: 3% nonfat dry milk in TBST. Detection: ECL Basic Kit (CABM00020). Exposure time: 60s.



Immunofluorescence analysis of C6 cells using IL18 antibody (CAB16737) at dilution of 1:100. Blue: DAPI for nuclear staining.



Immunofluorescence analysis of HeLa cells using IL18 antibody (CAB16737) at dilution of 1:100. Blue: DAPI for nuclear staining.



Immunofluorescence analysis of L929 cells using IL18 antibody (CAB16737) at dilution of 1:100. Blue: DAPI for nuclear staining.