

# SRSF7 Rabbit Polyclonal Antibody



CAB16738

## Product Information

### Size:

20uL, 50uL, 100uL, 200uL

### Observed MW:

35kDa

### Calculated MW:

15kDa/26kDa/27kDa

### Applications:

WB IHC IF

### Reactivity:

Human, Mouse, Rat

## Antibody Information

### Recommended dilutions:

WB 1:500 - 1:1000 IHC 1:50  
- 1:100 IF 1:50 - 1:100

### Source:

Rabbit

### Isotype:

IgG

### Purification:

Affinity purification

## Protein Background

The protein encoded by this gene is a member of the serine/arginine (SR)-rich family of pre-mRNA splicing factors, which constitute part of the spliceosome. Each of these factors contains an RNA recognition motif (RRM) for binding RNA and an RS domain for binding other proteins. The RS domain is rich in serine and arginine residues and facilitates interaction between different SR splicing factors. In addition to being critical for mRNA splicing, the SR proteins have also been shown to be involved in mRNA export from the nucleus and in translation. Two transcript variants encoding different isoforms have been found for this gene.

## Immunogen information

### Gene ID:

6432

### Uniprot

Q16629

### Synonyms:

SRSF7; 9G8; AAG3; SFRS7

### Immunogen:

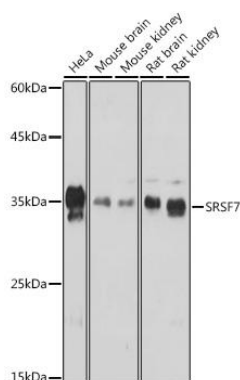
Recombinant fusion protein containing a sequence corresponding to amino acids 60-120 of human SRSF7 (NP\_001026854).

### Storage:

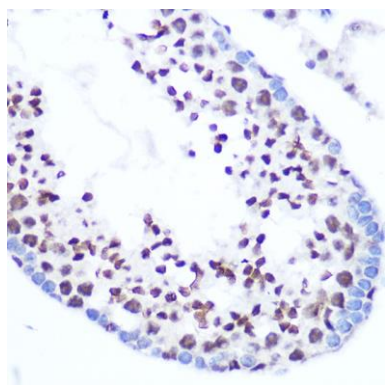
Store at -20°C. Avoid freeze / thaw cycles. Buffer: PBS with 0.02% sodium azide, 50% glycerol, pH7.3.

## Product Images

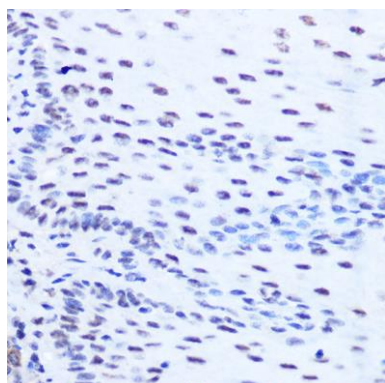
---



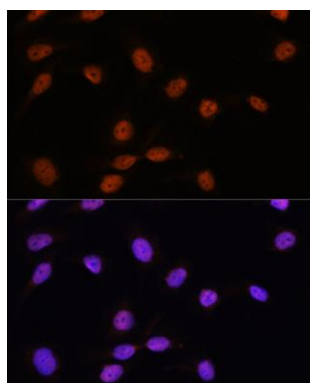
Western blot analysis of extracts of various cell lines, using SRSF7 Rabbit pAb (CAB16738) at 1:1000 dilution. Secondary antibody: HRP Goat Anti-Rabbit IgG (H+L) (CABS014) at 1:10000 dilution. Lysates/proteins: 25ug per lane. Blocking buffer: 3% nonfat dry milk in TBST. Detection: ECL Basic Kit (CABM00020). Exposure time: 60s.



Immunohistochemistry of paraffin-embedded mouse testis using SRSF7 Rabbit pAb (CAB16738) at dilution of 1:100 (40x lens).



Immunohistochemistry of paraffin-embedded human esophageal using SRSF7 Rabbit pAb (CAB16738) at dilution of 1:100 (40x lens).



Immunofluorescence analysis of U-2 OS cells using SRSF7 antibody (CAB16738) at dilution of 1:100. Blue: DAPI for nuclear staining.