

NLRC5 Rabbit Polyclonal Antibody



CAB16740

Product Information

Size:

20uL, 50uL, 100uL, 200uL

Observed MW:

204kDa

Calculated MW:

204kDa

Applications:

WB

Reactivity:

Mouse

Protein Background

This gene encodes a member of the caspase recruitment domain-containing NLR family. This gene plays a role in cytokine response and antiviral immunity through its inhibition of NF-kappa-B activation and negative regulation of type I interferon signaling pathways.

Immunogen information

Gene ID:

84166

Uniprot

Q86WI3

Synonyms:

NLRC5; CLR16.1; NOD27; NOD4

Antibody Information

Recommended dilutions:

WB 1:500 - 1:2000

Source:

Rabbit

Isotype:

IgG

Purification:

Affinity purification

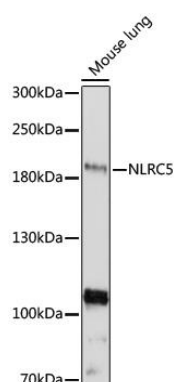
Immunogen:

Recombinant protein of human NLRC5

Storage:

Store at -20°C. Avoid freeze / thaw cycles. Buffer: PBS with 0.02% sodium azide, 50% glycerol, pH7.3.

Product Images



Western blot analysis of extracts of mouse lung, using NLRC5 antibody (CAB16740) at 1:1000 dilution. Secondary antibody: HRP Goat Anti-Rabbit IgG (H+L) (CABS014) at 1:10000 dilution. Lysates/proteins: 25ug per lane. Blocking buffer: 3% nonfat dry milk in TBST. Detection: ECL Enhanced Kit (CABM00021). Exposure time: 3min.