

SNIP1 Rabbit Polyclonal Antibody



CAB16747

Product Information

Size:

20uL, 50uL, 100uL, 200uL

Observed MW:

46kDa

Calculated MW:

45kDa

Applications:

WB IHC IF

Reactivity:

Human, Rat

Protein Background

This gene encodes a protein that contains a coiled-coil motif and C-terminal forkhead-associated (FHA) domain. The encoded protein functions as a transcriptional coactivator that increases c-Myc activity and inhibits transforming growth factor beta (TGF-beta) and nuclear factor kappa-B (NF-kB) signaling. The encoded protein also regulates the stability of cyclin D1 mRNA, and may play a role in cell proliferation and cancer progression. Mutations in this gene are a cause of psychomotor retardation, epilepsy, and craniofacial dysmorphism (PMRED).

Immunogen information

Gene ID:

79753

Uniprot

Q8TAD8

Synonyms:

SNIP1; PML1; PMRED

Antibody Information

Recommended dilutions:

WB 1:500 - 1:2000 IHC 1:50
- 1:200 IF 1:50 - 1:200

Source:

Rabbit

Isotype:

IgG

Purification:

Affinity purification

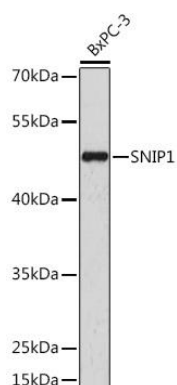
Immunogen:

Recombinant protein of human SNIP1.

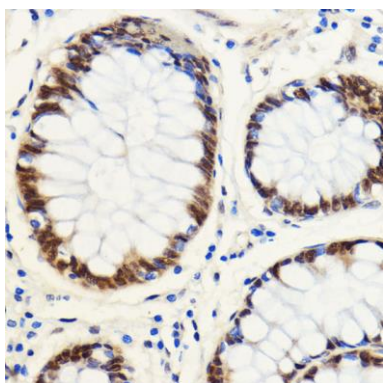
Storage:

Store at -20°C. Avoid freeze / thaw cycles. Buffer: PBS with 0.02% sodium azide, 50% glycerol, pH7.3.

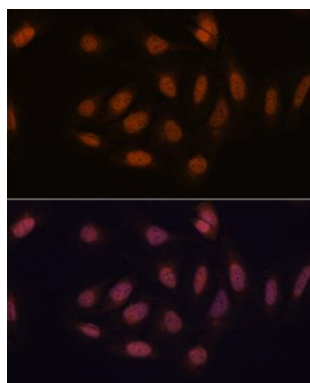
Product Images



Western blot analysis of extracts of BxPC-3 cells, using SNIP1 Rabbit pAb (CAB16747) at 1:1000 dilution. Secondary antibody: HRP Goat Anti-Rabbit IgG (H+L) (CABS014) at 1:10000 dilution. Lysates/proteins: 25ug per lane. Blocking buffer: 3% nonfat dry milk in TBST. Detection: ECL Basic Kit (CABM00020). Exposure time: 10s.



Immunohistochemistry of paraffin-embedded human colon carcinoma using SNIP1 antibody (CAB16747) at dilution of 1:100 (40x lens).



Immunofluorescence analysis of U-2 OS cells using SNIP1 antibody (CAB16747) at dilution of 1:100. Blue: DAPI for nuclear staining.