

# APOD Rabbit Polyclonal Antibody



CAB16757

---

## Product Information

### Size:

20uL, 50uL, 100uL, 200uL

### Observed MW:

Refer to figures

### Calculated MW:

21kDa

### Applications:

IHC

### Reactivity:

Human

## Protein Background

This gene encodes a component of high density lipoprotein that has no marked similarity to other apolipoprotein sequences. It has a high degree of homology to plasma retinol-binding protein and other members of the alpha 2 microglobulin protein superfamily of carrier proteins, also known as lipocalins. This glycoprotein is closely associated with the enzyme lecithin:cholesterol acyltransferase - an enzyme involved in lipoprotein metabolism.

## Immunogen information

### Gene ID:

347

### Uniprot

P05090

### Synonyms:

APOD

## Antibody Information

### Recommended dilutions:

IHC 1:25 - 1:100

### Source:

Rabbit

### Isotype:

IgG

### Purification:

Affinity purification

### Immunogen:

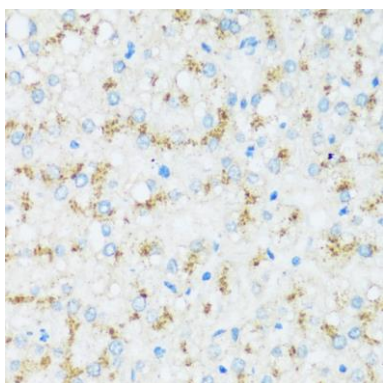
Recombinant fusion protein containing a sequence corresponding to amino acids 21-189 of human APOD (NP\_001638.1).

### Storage:

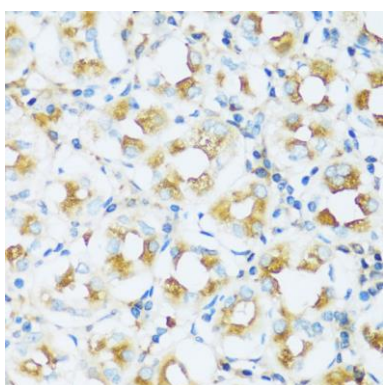
Store at -20°C. Avoid freeze / thaw cycles. Buffer: PBS with 0.02% sodium azide, 50% glycerol, pH7.3.

## Product Images

---



Immunohistochemistry of paraffin-embedded human liver using APOD antibody (CAB16757) at dilution of 1:100 (40x lens).



Immunohistochemistry of paraffin-embedded human stomach using APOD antibody (CAB16757) at dilution of 1:100 (40x lens).