

Bcl-2 Rabbit Polyclonal Antibody



CAB16776

Product Information

Size:

20uL, 50uL, 100uL, 200uL

Observed MW:

24kDa/26kDa

Calculated MW:

22kDa/26kDa

Applications:

WB IHC IF

Reactivity:

Human, Mouse, Rat

Protein Background

This gene encodes an integral outer mitochondrial membrane protein that blocks the apoptotic death of some cells such as lymphocytes. Constitutive expression of BCL2, such as in the case of translocation of BCL2 to Ig heavy chain locus, is thought to be the cause of follicular lymphoma. Alternative splicing results in multiple transcript variants.

Immunogen information

Gene ID:

596

Uniprot

P10415

Synonyms:

Bcl-2; PPP1R50; BCL2

Antibody Information

Recommended dilutions:

WB 1:500 - 1:2000 IHC 1:50
- 1:200 IF 1:50 - 1:200

Source:

Rabbit

Isotype:

IgG

Purification:

Affinity purification

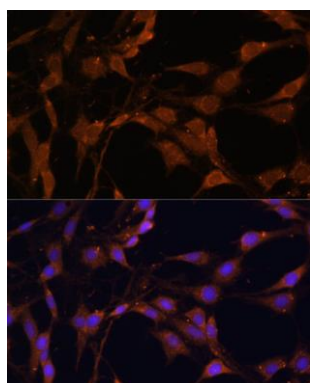
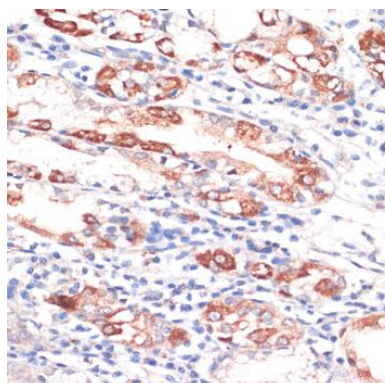
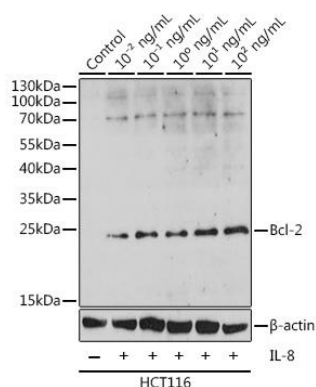
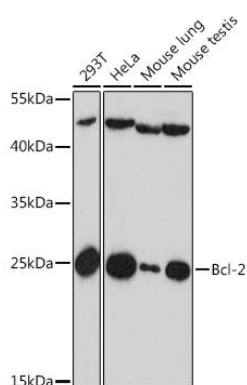
Immunogen:

A synthetic peptide corresponding to a sequence within amino acids 1-100 of human Bcl-2 (NP_000624.2).

Storage:

Store at -20°C. Avoid freeze / thaw cycles. Buffer: PBS with 0.02% sodium azide, 50% glycerol, pH7.3.

Product Images



Western blot analysis of extracts of various cells, using Bcl-2 antibody (CAB16776) at 1:1000 dilution. Secondary antibody: HRP Goat Anti-Rabbit IgG (H+L) (CABS014) at 1:10000 dilution. Lysates/proteins: 25ug per lane. Blocking buffer: 3% nonfat dry milk in TBST. Detection: ECL Basic Kit (CABM00020). Exposure time: 60s.

Western blot analysis of extracts of HCT116 cells, using Bcl-2 antibody (CAB16776) at 1:1000 dilution. HCT116 cells treated with different concentrations of IL-8. Secondary antibody: HRP Goat Anti-Rabbit IgG (H+L) (CABS014) at 1:10000 dilution. Lysates/proteins: 25ug per lane. Blocking buffer: 3% BSA. Detection: ECL Basic Kit (CABM00020). Exposure time: 30s.

Immunohistochemistry of paraffin-embedded human stomach using Bcl-2 antibody (CAB16776) at dilution of 1:200 (40x lens).

Immunofluorescence analysis of C6 cells using Bcl-2 antibody (CAB16776) at dilution of 1:100. Blue: DAPI for nuclear staining.