

KAT5 Rabbit Polyclonal Antibody



CAB1678

Product Information

Size:

20uL, 50uL, 100uL, 200uL

Observed MW:

62kDa

Calculated MW:

53kDa/56kDa/58kDa/61kDa

Applications:

WB IHC IF

Reactivity:

Human, Rat

Protein Background

The protein encoded by this gene belongs to the MYST family of histone acetyl transferases (HATs) and was originally isolated as an HIV-1 TAT-interactive protein. HATs play important roles in regulating chromatin remodeling, transcription and other nuclear processes by acetylating histone and nonhistone proteins. This protein is a histone acetylase that has a role in DNA repair and apoptosis and is thought to play an important role in signal transduction. Alternative splicing of this gene results in multiple transcript variants.

Immunogen information

Gene ID:

10524

Uniprot

Q92993

Synonyms:

KAT5; ESA1; HTATIP; HTATIP1; PLIP; TIP; TIP60; ZC2HC5; cPLA2

Antibody Information

Recommended dilutions:

WB 1:500 - 1:2000 IHC 1:50
- 1:200 IF 1:50 - 1:200

Source:

Rabbit

Isotype:

IgG

Purification:

Affinity purification

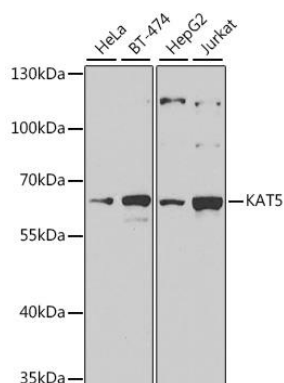
Immunogen:

Recombinant fusion protein containing a sequence corresponding to amino acids 1-230 of human KAT5 (NP_006379.2).

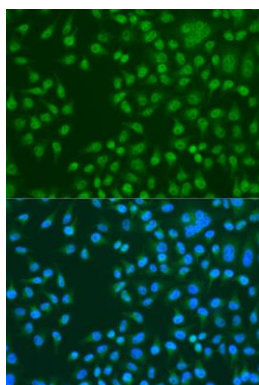
Storage:

Store at -20°C. Avoid freeze / thaw cycles. Buffer: PBS with 0.02% sodium azide, 50% glycerol, pH7.3.

Product Images



Western blot analysis of extracts of various cell lines, using KAT5 antibody (CAB1678) at 1:1000 dilution. Secondary antibody: HRP Goat Anti-Rabbit IgG (H+L) (CABS014) at 1:10000 dilution. Lysates/proteins: 25ug per lane. Blocking buffer: 3% nonfat dry milk in TBST. Detection: ECL Basic Kit (CABM00020). Exposure time: 90s.



Immunofluorescence analysis of U2OS cells using KAT5 antibody (CAB1678) at dilution of 1:100. Blue: DAPI for nuclear staining.