

Caspase-3 Rabbit Polyclonal Antibody



CAB16793

Product Information

Size:

20uL, 50uL, 100uL, 200uL

Observed MW:

17kDa/35kDa

Calculated MW:

31kDa

Applications:

WB IHC IF IP

Reactivity:

Human, Mouse, Rat

Antibody Information

Recommended dilutions:

WB 1:500 - 1:2000 IHC 1:50
- 1:200 IF 1:50 - 1:200 IP
1:50 - 1:200

Source:

Rabbit

Isotype:

IgG

Purification:

Affinity purification

Protein Background

This gene encodes a protein which is a member of the cysteine-aspartic acid protease (caspase) family. Sequential activation of caspases plays a central role in the execution-phase of cell apoptosis. Caspases exist as inactive proenzymes which undergo proteolytic processing at conserved aspartic residues to produce two subunits, large and small, that dimerize to form the active enzyme. This protein cleaves and activates caspases 6, 7 and 9, and the protein itself is processed by caspases 8, 9 and 10. It is the predominant caspase involved in the cleavage of amyloid-beta 4A precursor protein, which is associated with neuronal death in Alzheimer's disease. Alternative splicing of this gene results in two transcript variants that encode the same protein.

Immunogen information

Gene ID:

836

Uniprot

P42574

Synonyms:

CPP32; CPP32B; SCA-1; Active Caspase 3; CASP3; active Caspase-3;
Caspase 3; Caspase-3 p12; caspase-3

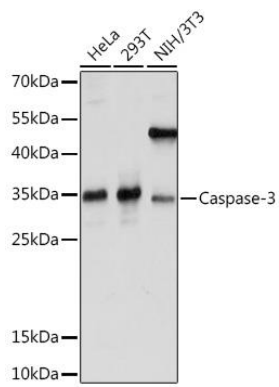
Immunogen:

Recombinant protein of human Caspase-3.

Storage:

Store at -20°C. Avoid freeze / thaw cycles. Buffer: PBS with 0.02% sodium azide, 50% glycerol, pH7.3.

Product Images



Western blot - Caspase-3 Rabbit pAb (CAB16793)