

CASQ1 Rabbit Polyclonal Antibody



CAB16796

Product Information

Size:

20uL, 50uL, 100uL, 200uL

Observed MW:

Refer to figures

Calculated MW:

Applications:

IHC IF

Reactivity:

Human, Mouse

Antibody Information

Recommended dilutions:

IHC 1:50 - 1:200 IF 1:50 - 1:200

Source:

Rabbit

Isotype:

IgG

Purification:

Affinity purification

Protein Background

This gene encodes the skeletal muscle specific member of the calsequestrin protein family. Calsequestrin functions as a luminal sarcoplasmic reticulum calcium sensor in both cardiac and skeletal muscle cells. This protein, also known as calmitine, functions as a calcium regulator in the mitochondria of skeletal muscle. This protein is absent in patients with Duchenne and Becker types of muscular dystrophy.

Immunogen information

Gene ID:

844

Uniprot

P31415

Synonyms:

CASQ1; CASQ; PDIB1; VMCQA

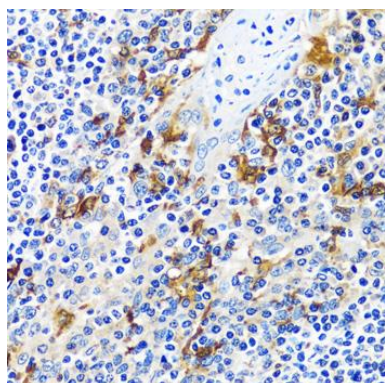
Immunogen:

Recombinant fusion protein containing a sequence corresponding to amino acids 35-280 of human CASQ1 (NP_001222.3).

Storage:

Store at -20°C. Avoid freeze / thaw cycles. Buffer: PBS with 0.02% sodium azide, 50% glycerol, pH7.3.

Product Images



Immunohistochemistry - CASQ1 Polyclonal Antibody (CAB16796)