

# CASQ2 Rabbit Polyclonal Antibody



CAB16797

## Product Information

### Size:

20uL, 50uL, 100uL, 200uL

### Observed MW:

46kDa

### Calculated MW:

38kDa/46kDa

### Applications:

WB IHC IF

### Reactivity:

Mouse, Rat

## Protein Background

The protein encoded by this gene specifies the cardiac muscle family member of the calsequestrin family. Calsequestrin is localized to the sarcoplasmic reticulum in cardiac and slow skeletal muscle cells. The protein is a calcium binding protein that stores calcium for muscle function. Mutations in this gene cause stress-induced polymorphic ventricular tachycardia, also referred to as catecholaminergic polymorphic ventricular tachycardia 2 (CPVT2), a disease characterized by bidirectional ventricular tachycardia that may lead to cardiac arrest.

## Immunogen information

### Gene ID:

845

### Uniprot

O14958

### Synonyms:

CASQ2; PDIB2

## Antibody Information

### Recommended dilutions:

WB 1:500 - 1:2000 IHC 1:50  
- 1:100 IF 1:50 - 1:100

### Source:

Rabbit

### Isotype:

IgG

### Purification:

Affinity purification

### Immunogen:

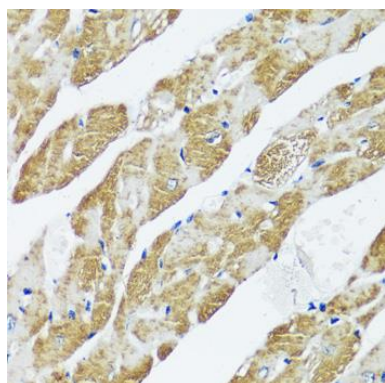
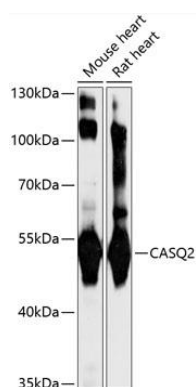
Recombinant fusion protein containing a sequence corresponding to amino acids 20-399 of human CASQ2 (NP\_001223.2).

### Storage:

Store at -20°C. Avoid freeze / thaw cycles. Buffer: PBS with 0.02% sodium azide, 50% glycerol, pH7.3.

## Product Images

---



Western blot analysis of extracts of various cell lines, using CASQ2 antibody (CAB16797) at 1:1000 dilution. Secondary antibody: HRP Goat Anti-Rabbit IgG (H+L) (CABS014) at 1:10000 dilution. Lysates/proteins: 25ug per lane. Blocking buffer: 3% nonfat dry milk in TBST. Detection: ECL Basic Kit (CABM00020). Exposure time: 1s.

Immunohistochemistry of paraffin-embedded mouse heart using CASQ2 antibody (CAB16797) at dilution of 1:100 (40x lens).