

# CD44 Rabbit Polyclonal Antibody



CAB16807

## Product Information

### Size:

20uL, 50uL, 100uL, 200uL

### Observed MW:

Refer to figures

### Calculated MW:

81kDa

### Applications:

WB IHC IF

### Reactivity:

Human, Mouse, Rat

## Antibody Information

### Recommended dilutions:

WB 1:500 - 1:2000 IHC 1:50  
- 1:200 IF 1:50 - 1:200

### Source:

Rabbit

### Isotype:

IgG

### Purification:

Affinity purification

## Protein Background

The protein encoded by this gene is a cell-surface glycoprotein involved in cell-cell interactions, cell adhesion and migration. It is a receptor for hyaluronic acid (HA) and can also interact with other ligands, such as osteopontin, collagens, and matrix metalloproteinases (MMPs). This protein participates in a wide variety of cellular functions including lymphocyte activation, recirculation and homing, hematopoiesis, and tumor metastasis. Transcripts for this gene undergo complex alternative splicing that results in many functionally distinct isoforms, however, the full length nature of some of these variants has not been determined. Alternative splicing is the basis for the structural and functional diversity of this protein, and may be related to tumor metastasis.

## Immunogen information

### Gene ID:

960

### Uniprot

P16070

### Synonyms:

CDW44; CSPG8; ECMR-III; HCELL; HUTCH-I; IN; LHR; MC56; MDU2;  
MDU3; MIC4; Pgp1; CD44; CD44

### Immunogen:

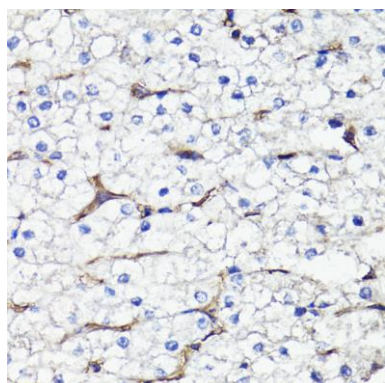
Recombinant fusion protein containing a sequence corresponding to amino acids 346-385 of human CD44 (NP\_000601.3).

### Storage:

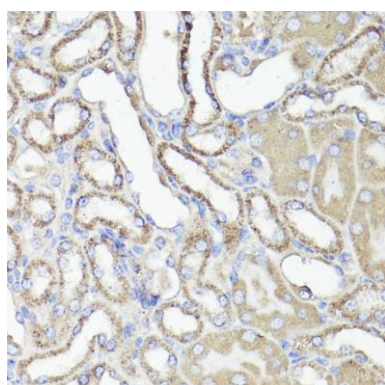
Store at -20°C. Avoid freeze / thaw cycles. Buffer: PBS with 0.02% sodium azide, 50% glycerol, pH7.3.

## Product Images

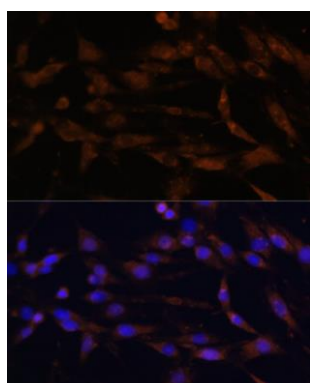
---



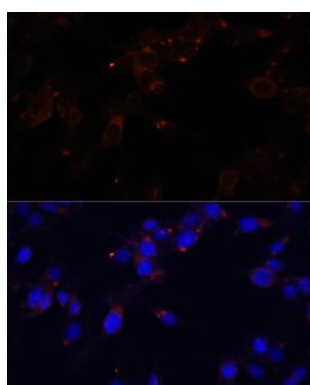
Immunohistochemistry of paraffin-embedded human liver using CD44 antibody (CAB16807) at dilution of 1:100 (40x lens).



Immunohistochemistry of paraffin-embedded mouse kidney using CD44 antibody (CAB16807) at dilution of 1:100 (40x lens).



Immunofluorescence analysis of C6 cells using CD44 antibody (CAB16807) at dilution of 1:100. Blue: DAPI for nuclear staining.



Immunofluorescence analysis of HeLa cells using CD44 antibody (CAB16807) at dilution of 1:100. Blue: DAPI for nuclear staining.