

DLG3 Rabbit Polyclonal Antibody



CAB16831

Product Information

Size:

20uL, 50uL, 100uL, 200uL

Observed MW:

110kDa/115kDa

Calculated MW:

42kDa/57kDa/90kDa

Applications:

WB IHC

Reactivity:

Human, Mouse, Rat

Protein Background

This gene encodes a member of the membrane-associated guanylate kinase protein family. The encoded protein may play a role in clustering of NMDA receptors at excitatory synapses. It may also negatively regulate cell proliferation through interaction with the C-terminal region of the adenomatosis polyposis coli tumor suppressor protein. Mutations in this gene have been associated with X-linked mental retardation. Alternatively spliced transcript variants have been described.

Immunogen information

Gene ID:

1741

Uniprot

Q92796

Synonyms:

DLG3; MRX; MRX90; NEDLG; PPP1R82; SAP102; XLMR

Antibody Information

Recommended dilutions:

WB 1:500 - 1:2000 IHC

1:100 - 1:200

Source:

Rabbit

Isotype:

IgG

Purification:

Affinity purification

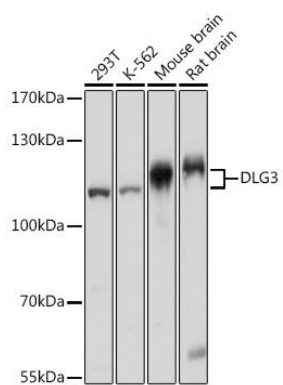
Immunogen:

Recombinant fusion protein containing a sequence corresponding to amino acids 464-817 of human DLG3 (NP_066943.2).

Storage:

Store at -20°C. Avoid freeze / thaw cycles. Buffer: PBS with 0.02% sodium azide, 50% glycerol, pH7.3.

Product Images



Western blot - DLG3 Rabbit pAb (CAB16831)