

HCFC1 Rabbit Polyclonal Antibody



CAB16871

Product Information

Size:

20uL, 50uL, 100uL, 200uL

Observed MW:

120-260kDa

Calculated MW:

Protein Background

This gene is a member of the host cell factor family and encodes a protein with five Kelch repeats, a fibronectin-like motif, and six HCF repeats, each of which contains a highly specific cleavage signal. This nuclear coactivator is proteolytically cleaved at one of the six possible sites, resulting in the creation of an N-terminal chain and the corresponding C-terminal chain. The final form of this protein consists of noncovalently bound N- and C-terminal chains. The protein is involved in control of the cell cycle and transcriptional regulation during herpes simplex virus infection. Alternatively spliced variants which encode different protein isoforms have been described; however, not all variants have been fully characterized.

Immunogen information

Applications:

WB

Reactivity:

Human, Mouse, Rat

Gene ID:

3054

Uniprot

P51610

Synonyms:

HCFC1; CFF; HCF; HCF-1; HCF1; HFC1; MRX3; PPP1R89; VCAF

Antibody Information

Recommended dilutions:

WB 1:500 - 1:2000

Source:

Rabbit

Isotype:

IgG

Immunogen:

Recombinant fusion protein containing a sequence corresponding to amino acids 1-250 of human HCFC1 (NP_005325.2).

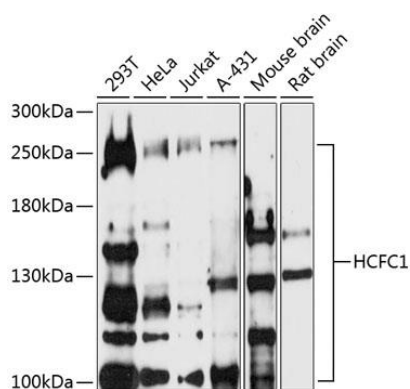
Storage:

Store at -20°C. Avoid freeze / thaw cycles. Buffer: PBS with 0.02% sodium azide, 50% glycerol, pH7.3.

Purification:

Affinity purification

Product Images



Western blot analysis of extracts of various cell lines, using HCFC1 antibody (CAB16871) at 1:500 dilution. Secondary antibody: HRP Goat Anti-Rabbit IgG (H+L) (CABS014) at 1:10000 dilution. Lysates/proteins: 25ug per lane. Blocking buffer: 3% nonfat dry milk in TBST. Detection: ECL Enhanced Kit (CABM00021). Exposure time: 90s.