

# [KO Validated] HIF1Alpha Rabbit Polyclonal Antibody

## CAB16873



### Product Information

**Size:**

20uL, 50uL, 100uL, 200uL

**Observed MW:**

120kDa

**Calculated MW:**

82kDa/92kDa/95kDa

**Applications:**

WB IHC

**Reactivity:**

Human, Mouse, Rat

### Antibody Information

**Recommended dilutions:**

WB 1:500 - 1:2000 IHC 1:50  
- 1:200

**Source:**

Rabbit

**Isotype:**

IgG

**Purification:**

Affinity purification

### Protein Background

This gene encodes the alpha subunit of transcription factor hypoxia-inducible factor-1 (HIF-1), which is a heterodimer composed of an alpha and a beta subunit. HIF-1 functions as a master regulator of cellular and systemic homeostatic response to hypoxia by activating transcription of many genes, including those involved in energy metabolism, angiogenesis, apoptosis, and other genes whose protein products increase oxygen delivery or facilitate metabolic adaptation to hypoxia. HIF-1 thus plays an essential role in embryonic vascularization, tumor angiogenesis and pathophysiology of ischemic disease. Alternatively spliced transcript variants encoding different isoforms have been identified for this gene.

### Immunogen information

**Gene ID:**

3091

**Uniprot**

Q16665

**Synonyms:**

HIF1A; HIF-1-alpha; HIF-1A; HIF-1alpha; HIF1; HIF1-ALPHA; MOP1; PASD8; bHLHe78

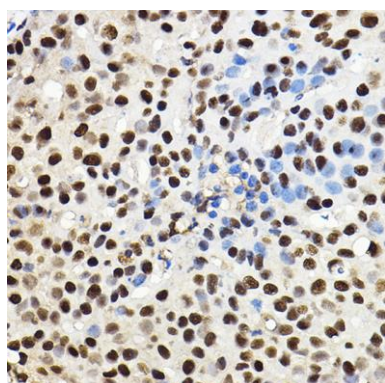
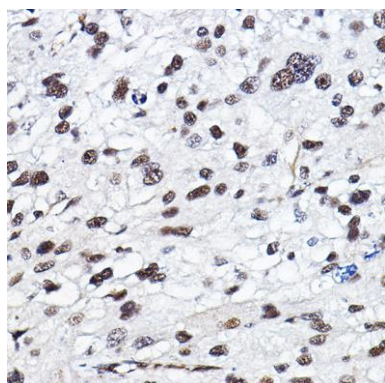
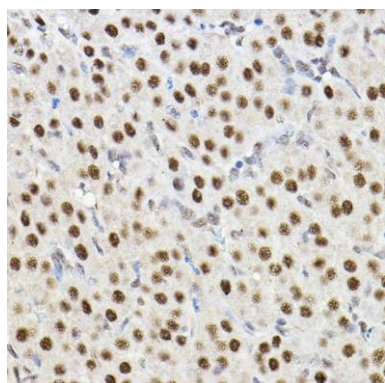
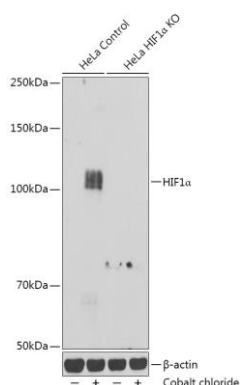
**Immunogen:**

Recombinant protein of human HIF1Alpha.

**Storage:**

Store at -20°C. Avoid freeze / thaw cycles. Buffer: PBS with 0.02% sodium azide, 50% glycerol, pH7.3.

## Product Images



Western blot analysis of extracts from normal (control) and HIF1α knockout (KO) HeLa cells, using HIF1α antibody (CAB16873) at 1:1000 dilution. Both HeLa cells and HIF1α knockout (KO) HeLa cells were treated by Cobalt chloride (250 μM) at 37°C for 16 hours. Secondary antibody: HRP Goat Anti-Rabbit IgG (H+L) (CABS014) at 1:10000 dilution. Lysates/proteins: 25 μg per lane. Blocking buffer: 3% nonfat dry milk in TBST. Detection: ECL Basic Kit (CABM00020). Exposure time: 180s.

Immunohistochemistry of paraffin-embedded rat ovary using HIF1α Rabbit pAb (CAB16873) at dilution of 1:100 (40x lens).

Immunohistochemistry of paraffin-embedded human liver cancer using HIF1α Rabbit pAb (CAB16873) at dilution of 1:100 (40x lens).

Immunohistochemistry of paraffin-embedded human breast cancer using HIF1α Rabbit pAb (CAB16873) at dilution of 1:100 (40x lens).