

# MyD88 Rabbit Polyclonal Antibody



CAB16889

## Product Information

### Size:

20uL, 50uL, 100uL, 200uL

### Observed MW:

35kDa

### Calculated MW:

15kDa/20kDa/28kDa/31kDa/  
33kDa/34kDa

### Applications:

WB IF

### Reactivity:

Human, Mouse, Rat

## Antibody Information

### Recommended dilutions:

WB 1:500 - 1:2000 IF 1:50 -  
1:200

### Source:

Rabbit

### Isotype:

IgG

### Purification:

Affinity purification

## Protein Background

This gene encodes a cytosolic adapter protein that plays a central role in the innate and adaptive immune response. This protein functions as an essential signal transducer in the interleukin-1 and Toll-like receptor signaling pathways. These pathways regulate that activation of numerous proinflammatory genes. The encoded protein consists of an N-terminal death domain and a C-terminal Toll-interleukin1 receptor domain. Patients with defects in this gene have an increased susceptibility to pyogenic bacterial infections. Alternate splicing results in multiple transcript variants.

## Immunogen information

### Gene ID:

4615

### Uniprot

Q99836

### Synonyms:

MYD88; MYD88D; myeloid differentiation primary response 88;  
MyD88

### Immunogen:

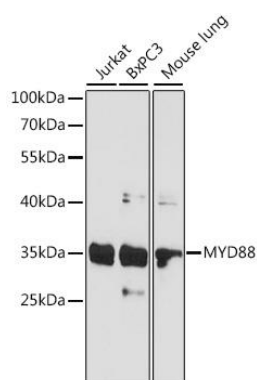
Recombinant protein of human MyD88

### Storage:

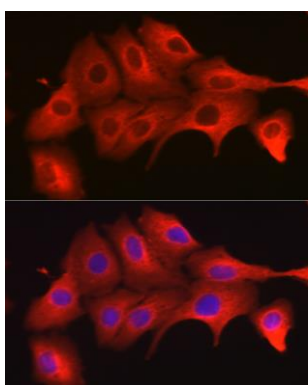
Store at -20°C. Avoid freeze / thaw cycles. Buffer: PBS with 0.02%  
sodium azide, 50% glycerol, pH7.3.

## Product Images

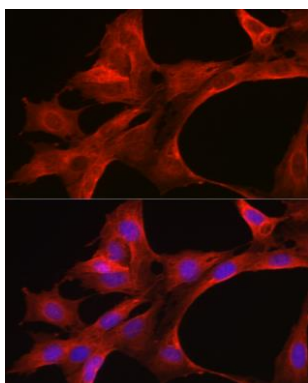
---



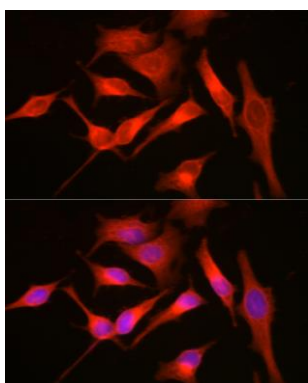
Western blot analysis of extracts of various cell lines, using MYD88 antibody (CAB16889) at 1:1000 dilution. Secondary antibody: HRP Goat Anti-Rabbit IgG (H+L) (CABS014) at 1:10000 dilution. Lysates/proteins: 25ug per lane. Blocking buffer: 3% nonfat dry milk in TBST. Detection: ECL Basic Kit (CABM00020). Exposure time: 90s.



Immunofluorescence analysis of A549 cells using MyD88 Rabbit pAb (CAB16889) at dilution of 1:200 (40x lens). Blue: DAPI for nuclear staining.



Immunofluorescence analysis of C6 cells using MyD88 Rabbit pAb (CAB16889) at dilution of 1:200 (40x lens). Blue: DAPI for nuclear staining.



Immunofluorescence analysis of HeLa using MyD88 Rabbit pAb (CAB16889) at dilution of 1:200 (40x lens). Blue: DAPI for nuclear staining.